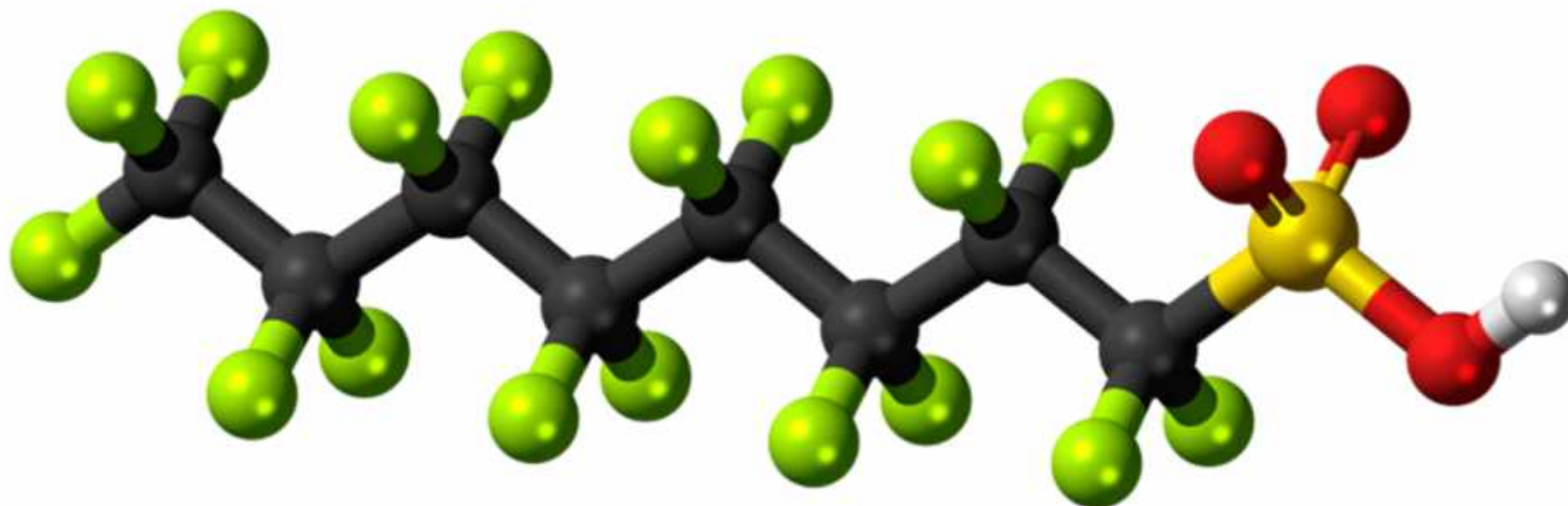


Madison Metropolitan Sewerage District



What is PFAS?

Per- and polyfluoroalkyl Substances



Where is it found?

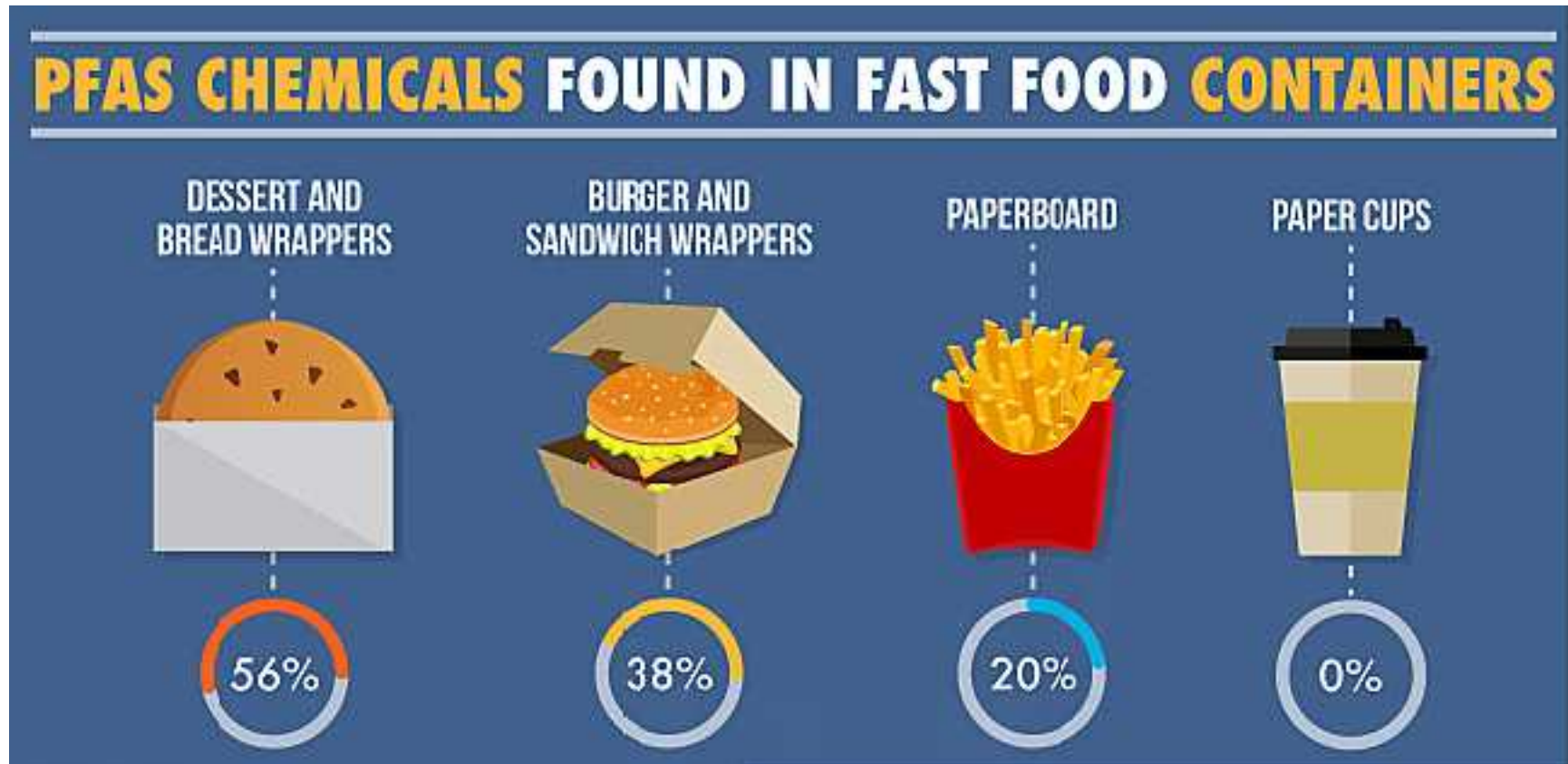


Everywhere

Madison Metropolitan Sewerage District



Exposure



Exposure



CARPETS



CARPET CLEANING PRODUCTS



FOOD PACKAGING



FURNISHINGS



COSMETICS



OUTDOOR GEAR



CLOTHING



ADHESIVES AND SEALANTS



PROTECTIVE COATINGS



NON-STICK COOKWARE



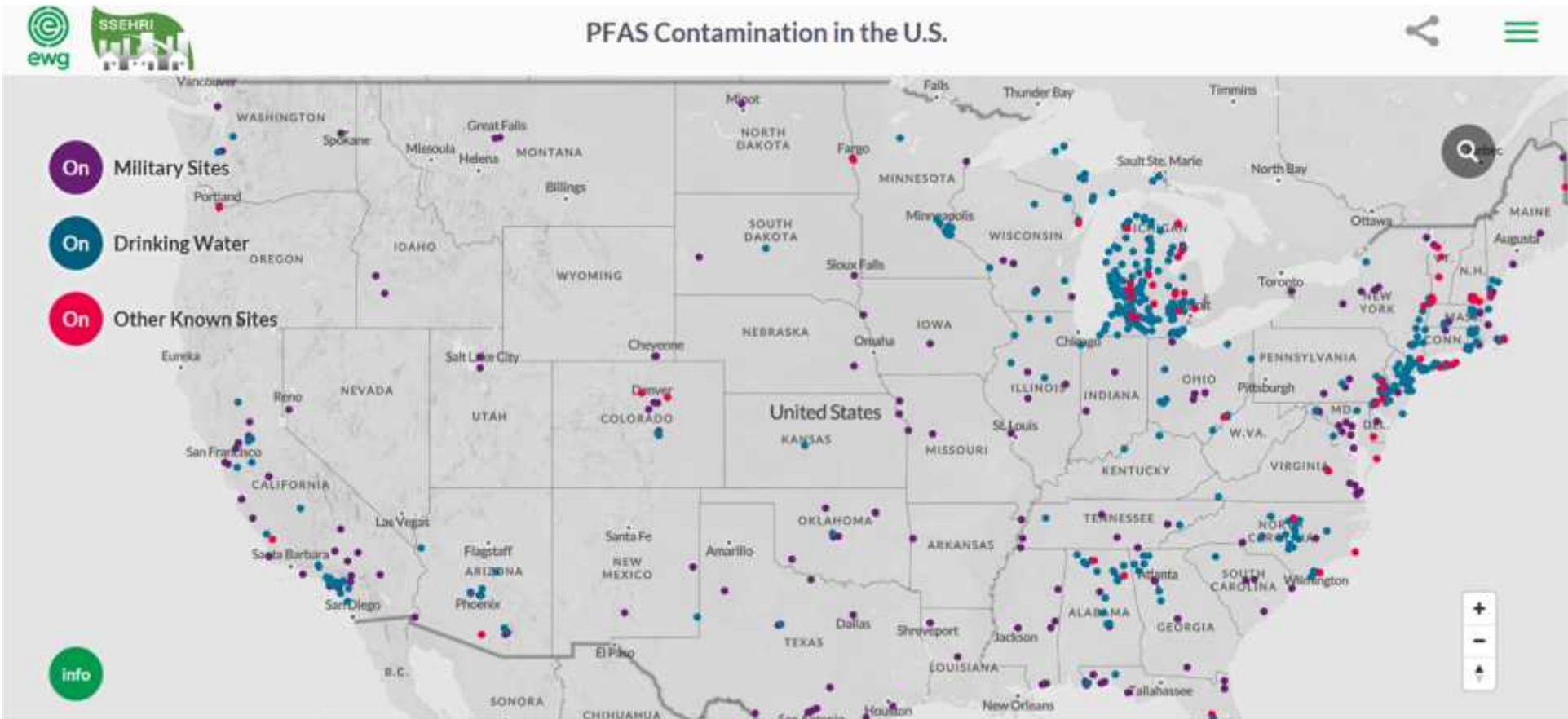
CARSEATS



FIREFIGHTING FOAM



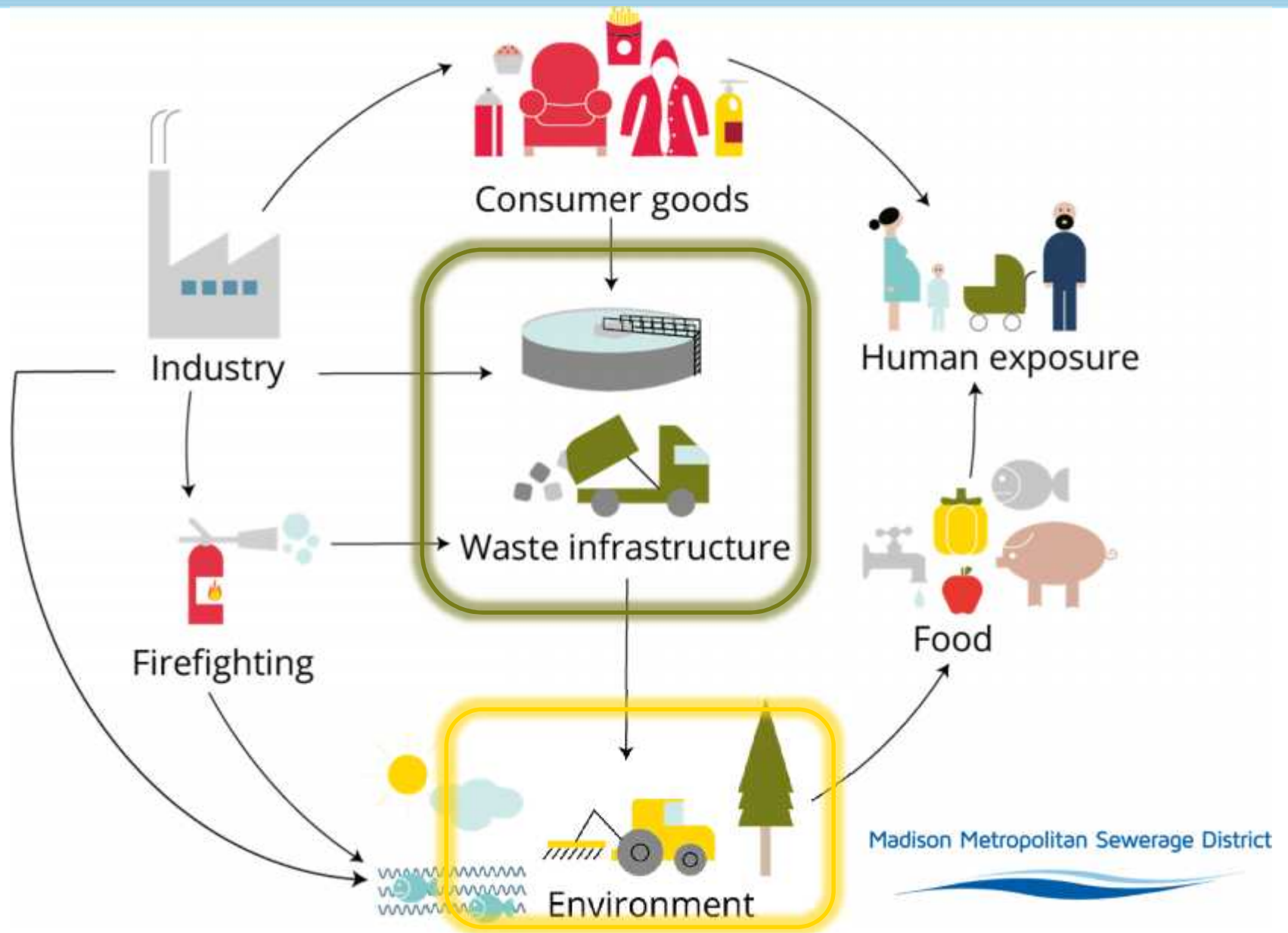
What is the concern?



Madison Metropolitan Sewerage District



Reflect the Communities We Serve



District Action Plan

Madison Metropolitan Sewerage District



Background and actions to
address per- and polyfluoroalkyl
substances (PFAS)

Last revised June 4, 2019

<https://madsewerpfasinitiative.org/>

Fate & Transport



Madison Metropolitan Sewerage District

Treatment options



Madison Metropolitan Sewerage District

Sampling and Analysis



Madison Metropolitan Sewerage District



Sampling and Analysis

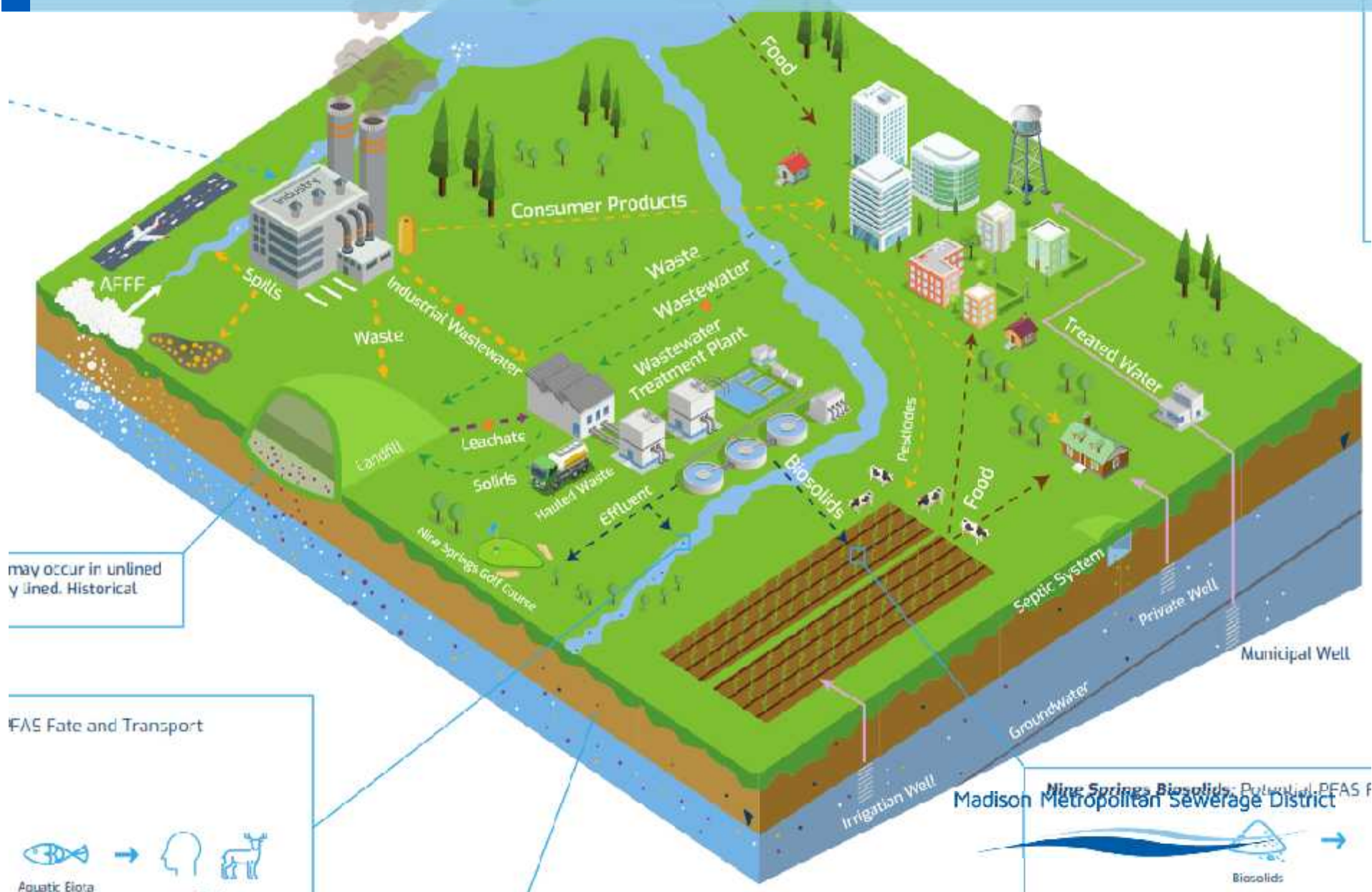


Madison Metropolitan Sewerage District

The aerial photograph shows the Madison Metropolitan Sewerage District facility. It features several large, circular aeration tanks arranged in a grid-like pattern. There are also several large, rectangular industrial buildings, likely for sludge processing or chemical storage. The facility is surrounded by green grass and some trees. A road, labeled 'S Towne Dr', runs along the right side of the facility. The overall layout is organized and functional, typical of a large-scale wastewater treatment plant.

[illegible][illegible]

Conceptual Site Model



Sewer Use Ordinance



**No violation of the District's WPDES permit
or interfere with plant operations**



**No impact to safety
No impact to resource recovery and reuse
No detrimental effect
No condition unacceptable to public agency**

no ordinance changes needed



Industrial Permits



Pollution Prevention

Source Identification
Source Minimization
Maintaining Reductions

Madison Metropolitan Sewerage District

Source Identification



Source Minimization



Madison Metropolitan Sewerage District

Maintaining Reductions

Quantify Reductions

Madison Metropolitan Sewerage District



Pollution Prevention Success



Mercury



Salt



Phosphorus



Pharmaceuticals



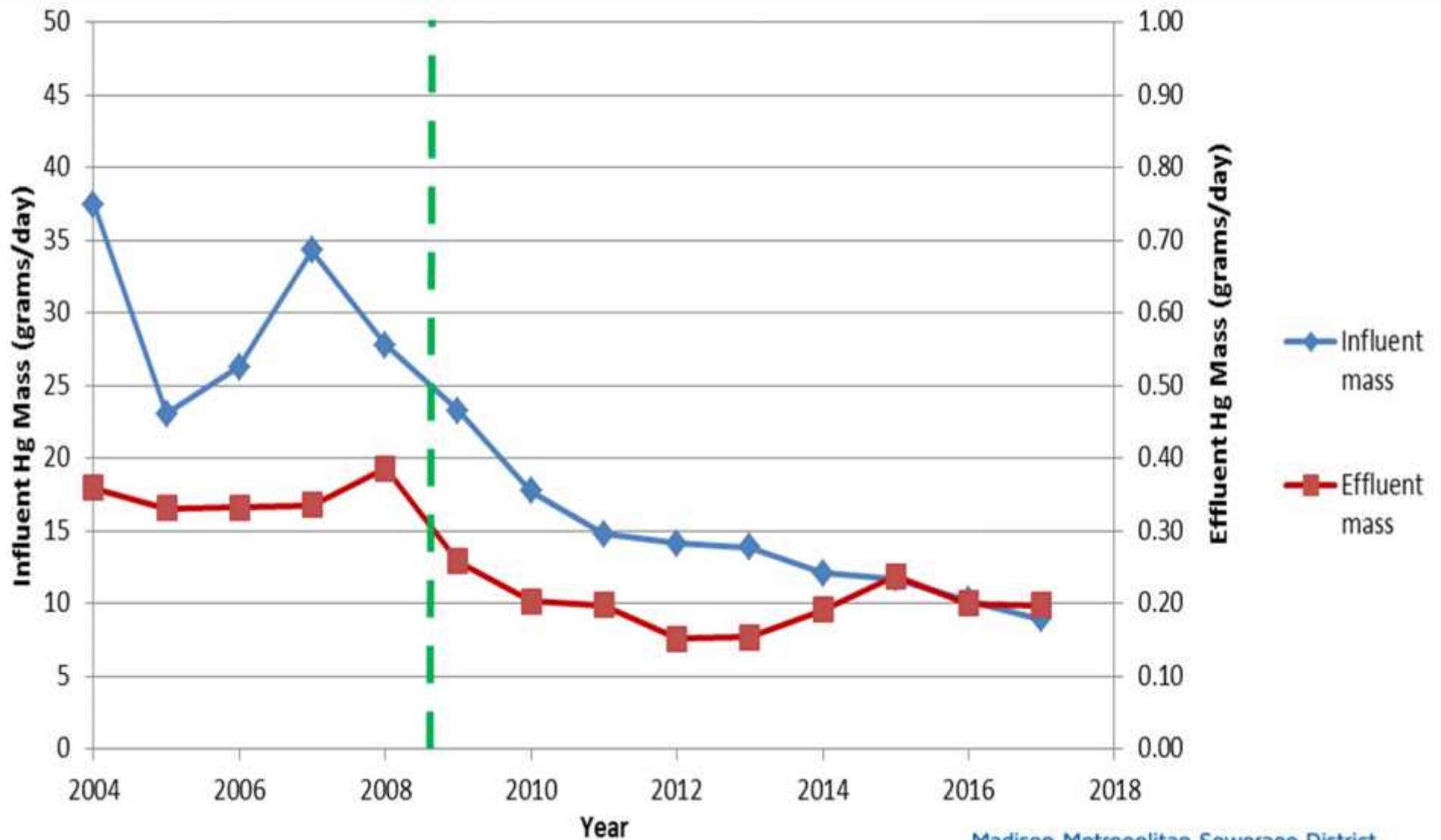
'Flushables'
& 'FOG'



Regulated – MMSD has permit limit



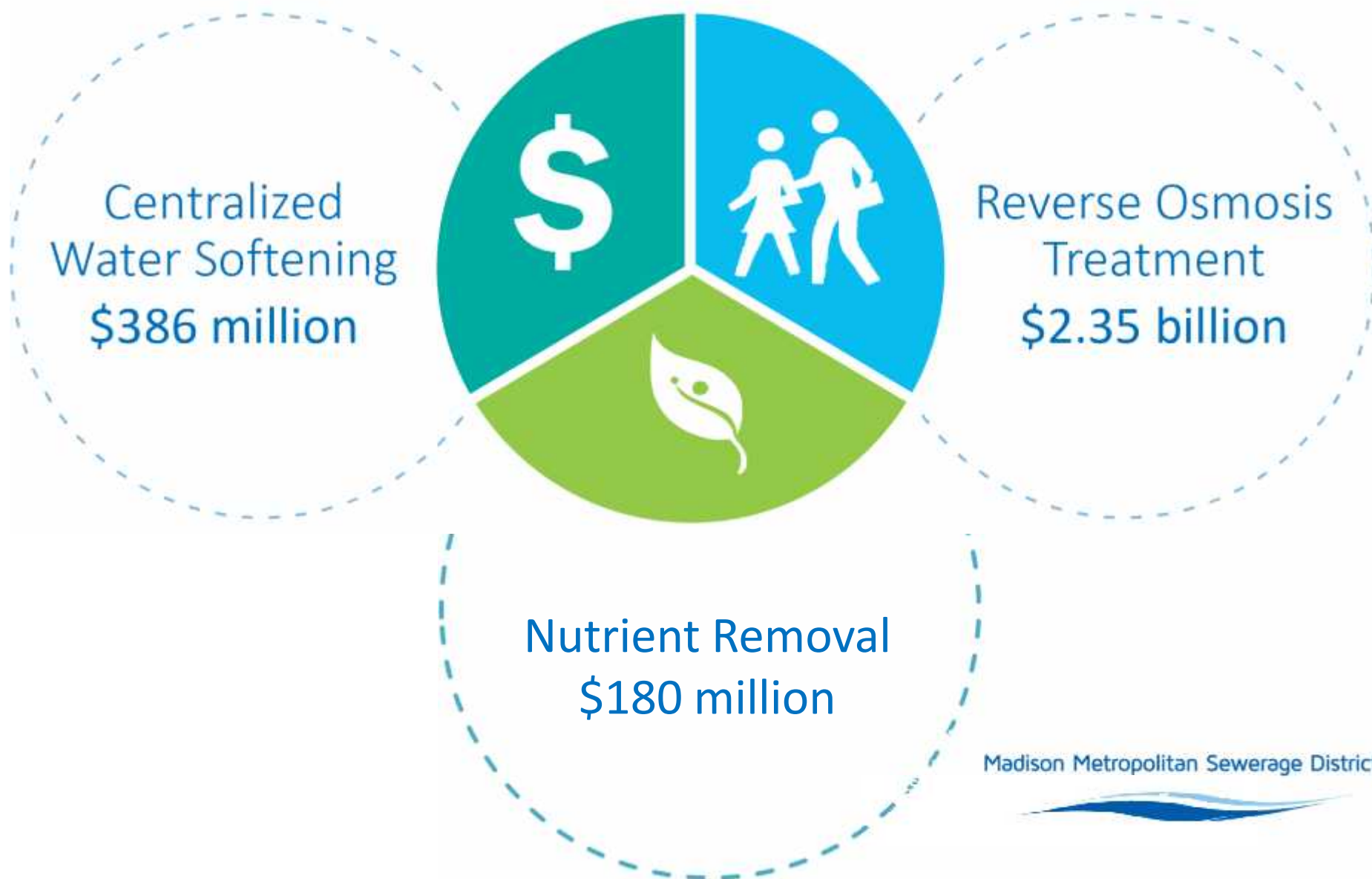
Pollution Prevention Success: Mercury



Madison Metropolitan Sewerage District



Technological Solutions Are Costly



Contextual Communication

DOING OUR PART FOR PFAS

Across the nation, communities and public entities are struggling with how to best address the issue PFAS, or per- and polyfluoroalkyl substances, in our environment.

Learn more about what Madison Metropolitan Sewerage District is doing to address PFAS in wastewater and beneficial biosolids and the role individuals and businesses have in helping reduce PFAS use and contamination.

Madison Metropolitan Sewerage District

<https://madsewerpfasinitiative.org/>



Conclusions



Madison Metropolitan Sewerage District



Thank you

Madison Metropolitan Sewerage District

