

# Septage and Holding Tank Waste Receiving

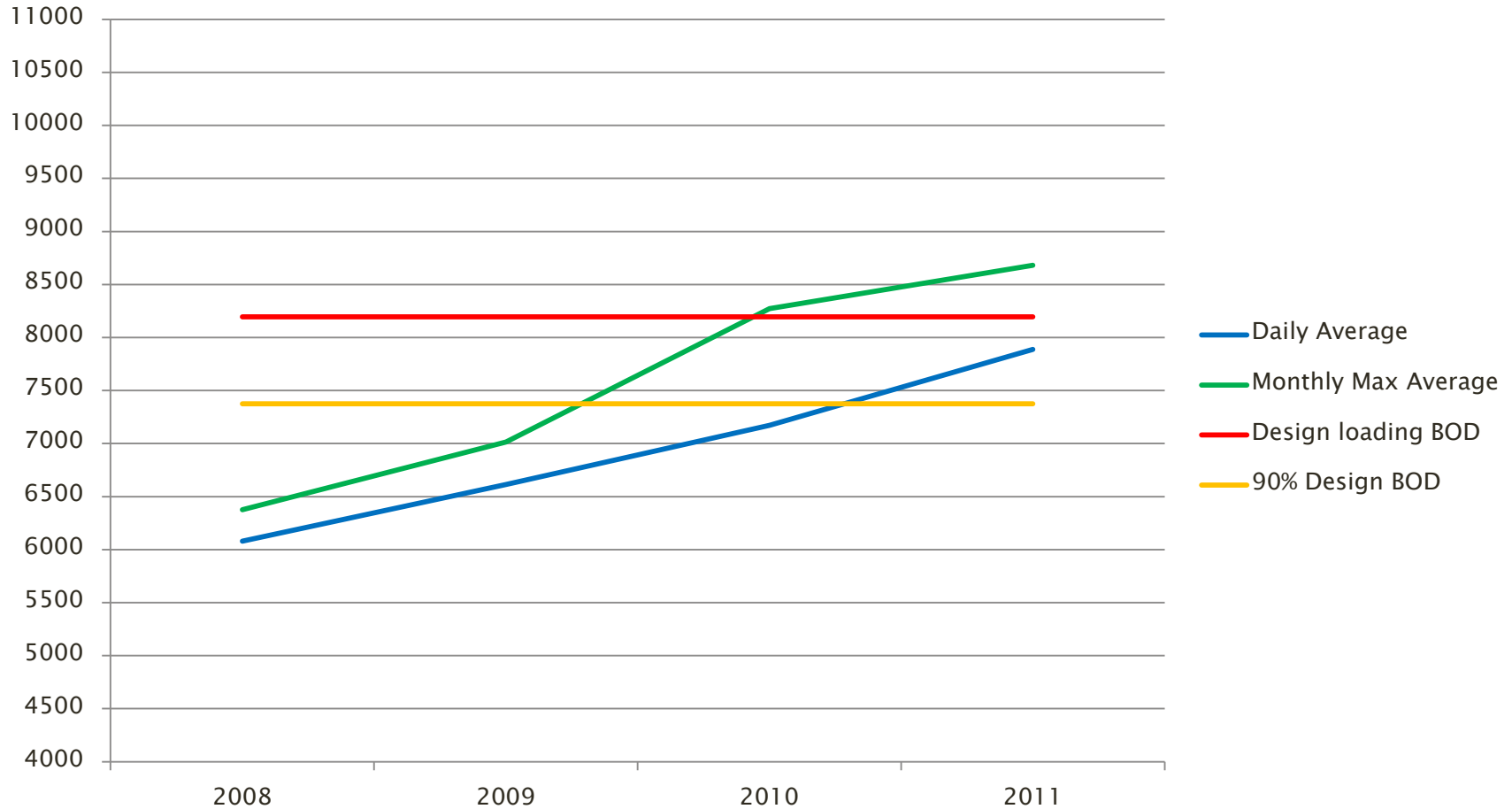
Stevens Point's Experiences

# Motivating Factors

- ▶ Even out loadings
- ▶ Stabilize Bio-P process
- ▶ Increased biogas production
- ▶ Tipping Fee Revenue
- ▶ Best way as a region to handle the material



# Influent Loadings 2008 – 2011

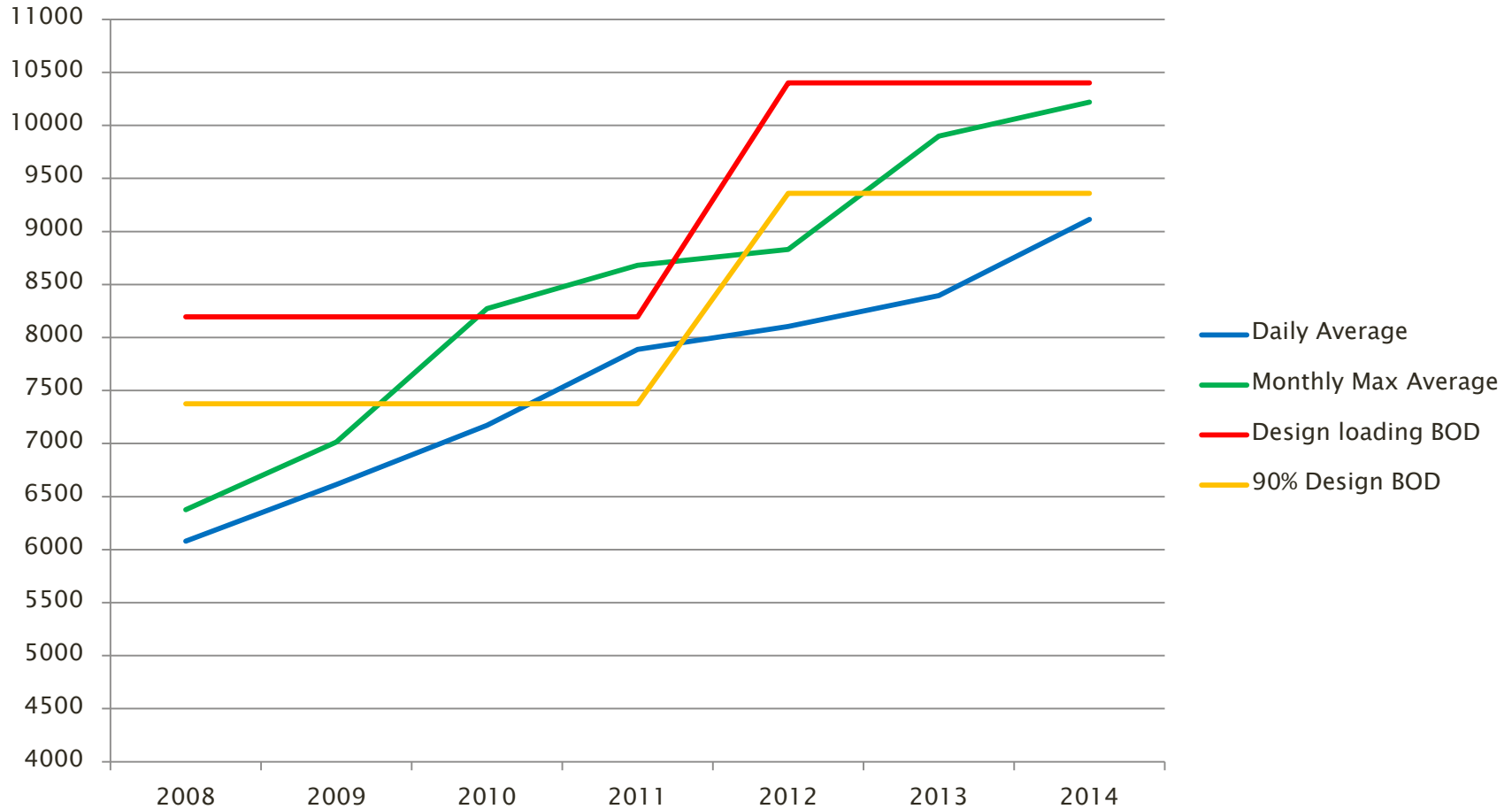


# Solids Processing Upgrade

## ► Capacity Re-rate

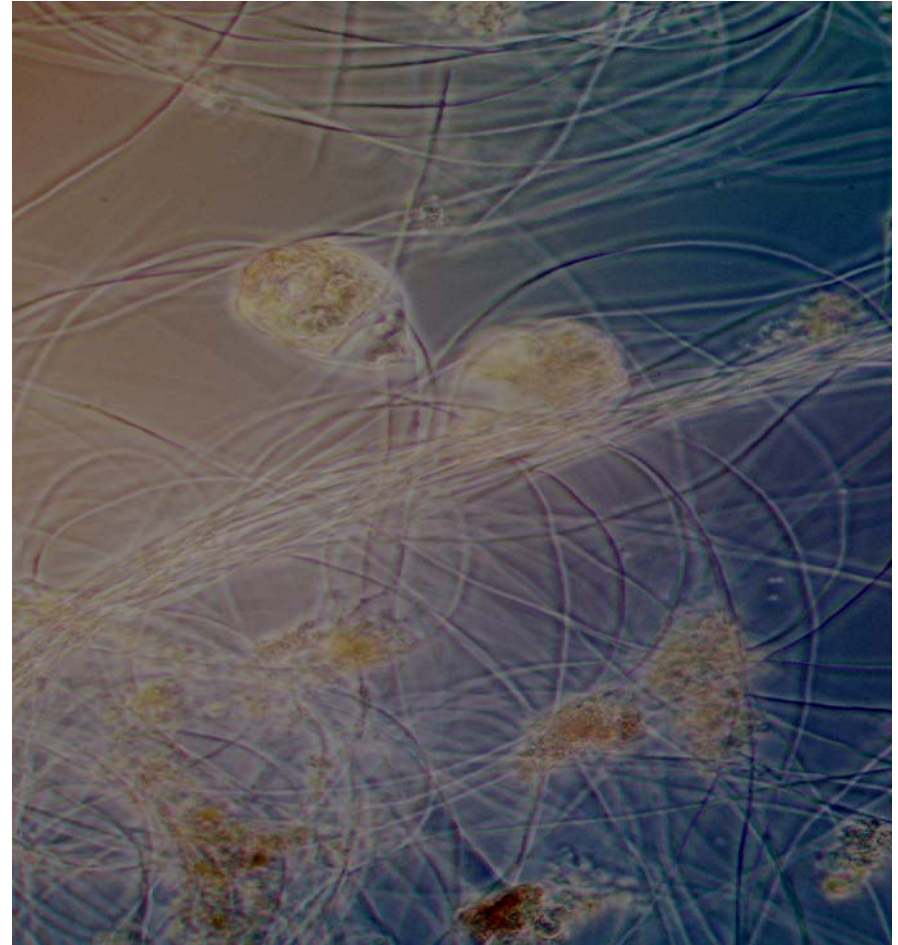
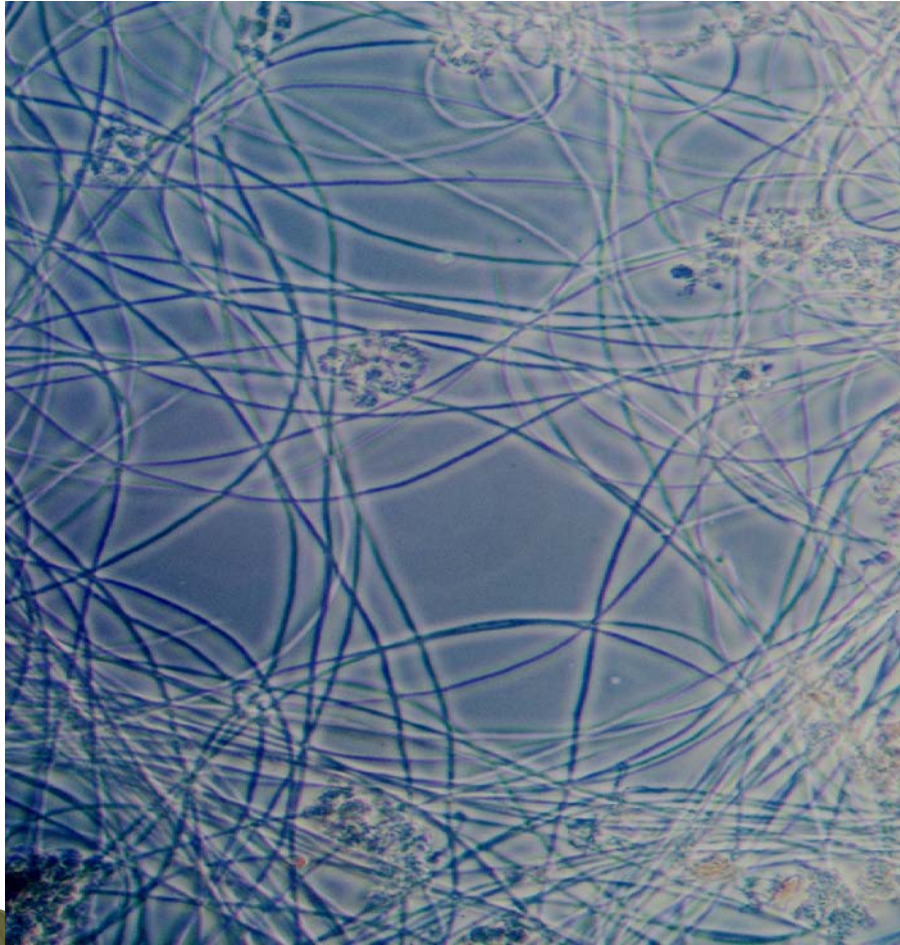
- Converted secondary digester to a primary digester
  - 428,000 gallons to 735,000 gallons (Mesophilic)
  - 8,196 lbs BOD/day to 10,400 lbs BOD/day

# Plant Loading 2008– 2014





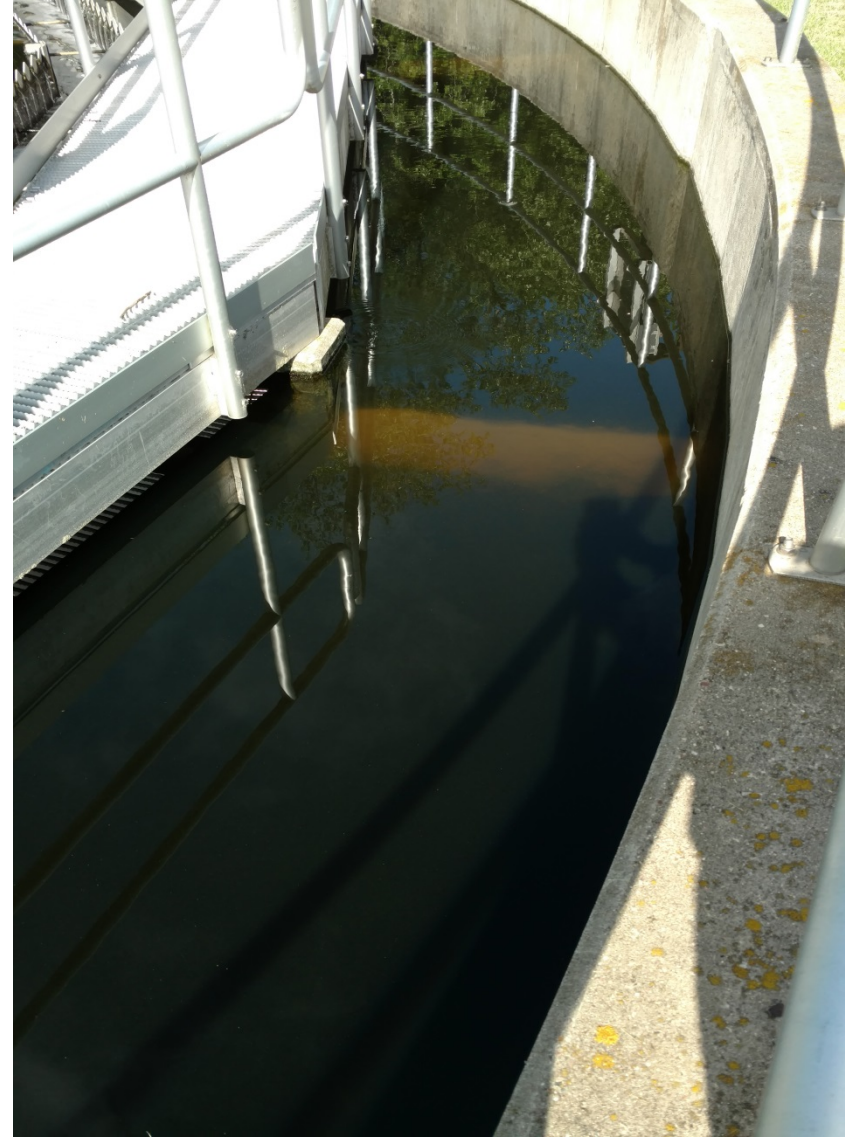
# Learning Opportunities



Micrographs courtesy of MacDonald Environmental Services



# Learning Opportunities

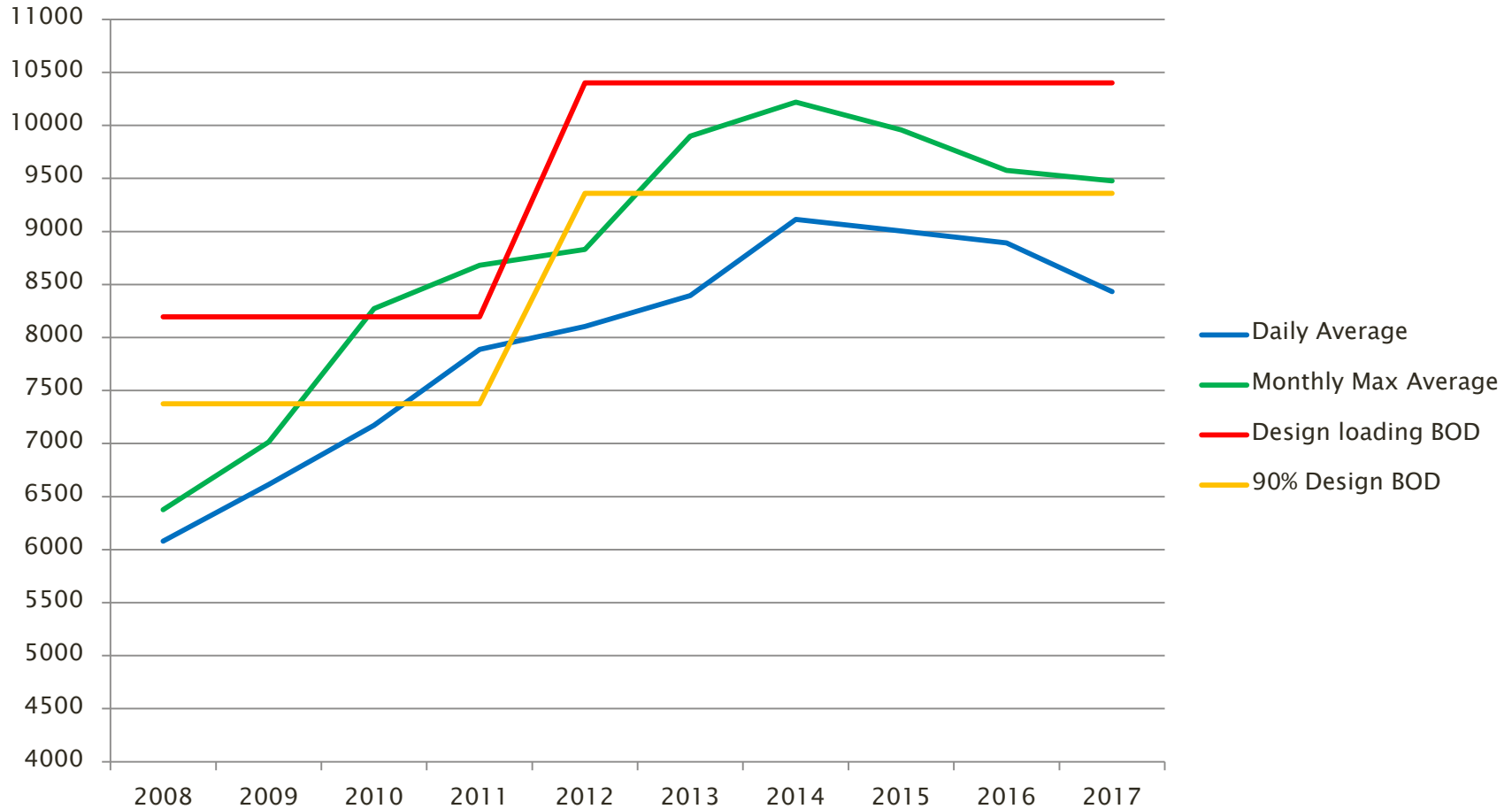


# Time to Adapt

- ▶ 2014 Brewery HSW project
  - Removed over 500 lbs BOD/day
- ▶ 2016 Increased tipping fees
  - Increased septage fees by 36%
  - Increased holding tank fees by 86%
    - loadings changed less than 1%
- ▶ May 2017 limited haulers to single load/day
  - More allowed with permission



# Plant Loadings 2008 – 2017



# Received Wastes in 2017

- ▶ Septage
  - 4628 gallons/day
  - 280 lbs BOD/day
  - 396 lbs TSS/day
  
- ▶ Holding
  - 5288 gallons/day
  - 112 lbs BOD/day
  - 173 lbs TSS/day
  
- ▶ High Strength
  - 8415 gallons/day
  - 5085 lbs BOD/day
  - 3506 lbs TSS/day



# Future Plans?

Chris Lefebvre  
Wastewater Superintendent  
City of Stevens Point Public Utilities  
[clefebvre@stevenspoint.com](mailto:clefebvre@stevenspoint.com)

