



NEW Water

*The brand of the Green Bay
Metropolitan Sewerage District*



Safety Improvements to Existing Equipment and Safety Promotion Journey

Health, Safety and Security Coordinator
Jeremy Klingbeil



Son, Next Time I'll Be William Tell





Texas utility worker in over his head fixing a water main break

Andrea Adams

f



f

A

d

0:00 / 1:00

j

n

h

m

k

i

g

t



WHY? Legally

Wisconsin Department of Safety and Professional Services

SPS 332.15 OSHA Safety and health standards.

Except as provided in s. SPS 332.16 and subch. IV, all places of employment and public buildings of a public employer shall comply with the federal Occupational Safety and Health Administration (OSHA) requirements adopted under s. SPS 332.50.

SPS 332.50 Incorporation of standards by reference.

The standards listed in the following table are hereby incorporated by reference into this chapter under the authority provided in s. 101.055 (3) (a), Stats. **Note:** Copies of the adopted standards are available through the sources listed in the table.

Table 332.50

Occupational Safety and Health Administration (OSHA)

U. S. Government Printing Office

732 N. Capitol Street, NW

Washington, DC 20401

Telephone: 866/512-1800

Online Bookstore: <http://bookstore.gpo.gov>

E-copies: <http://www.gpo.gov/fdsys/search/submitcitation.action?publication=CFR>

1. Recording and Reporting Occupational Injuries and Illnesses, Title 29 CFR Part 1904, July 1, 2010.
2. Occupational Safety and Health Standards, Title 29 CFR Part 1910, July 1, 2010.
3. Occupational Safety and Health Standards for Shipyard Employment, Title 29 CFR Part 1915, July 1, 2010.
4. Occupational Safety and Health Standards for Marine Terminals, Title 29 CFR Part 1917, July 1, 2010.
5. Occupational Safety and Health Regulations for Construction, Title 29 CFR Part 1926, July 1, 2010.
6. Occupational Safety and Health Standards for Agriculture, Title 29 CFR Part 1928, July 1, 2010.

History: Cr. Register, February, 1999, No. 518, eff. 3-1-99; am. Table 32.50-1, r. and recr. 32.50-2, Register, June, 2000, No. 534, eff. 7-1-00; CR 01-

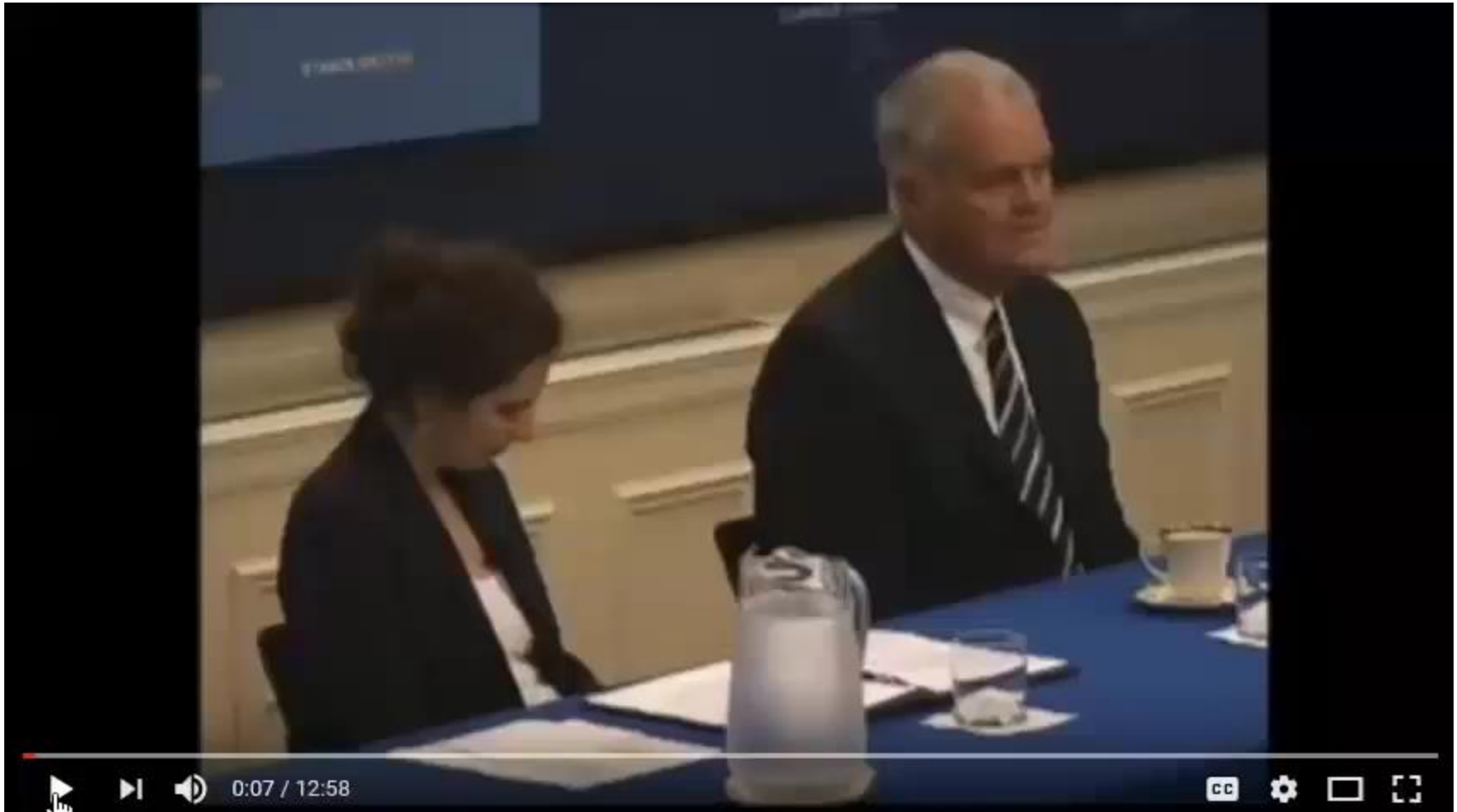


Public Sector Safety Top Violations

- 1910.1200(e)(1) – Hazard Communications
- 1910.178(l)(1)(i) – Powered Industrial Truck
- 1910.147(c)(1) – Energy Control Program
- 1910.132(d)(1) – PPE Assessment
- 1910.134(c) – Respiratory Protection
- 1910.146(c)(1) – Confined Spaces
- 1910.212(a)(3)(ii) – Machine Guarding
- 1910.22(a)(1) – House Keeping
- 1910.25(d)(1)(x) – Defective Ladder

<http://dsps.wi.gov/Programs/Industry-Services/Industry-Services-Programs/Public-Sector-Employee-Safety/>

WHY? Personally





EBS Lift Stations

Challenges

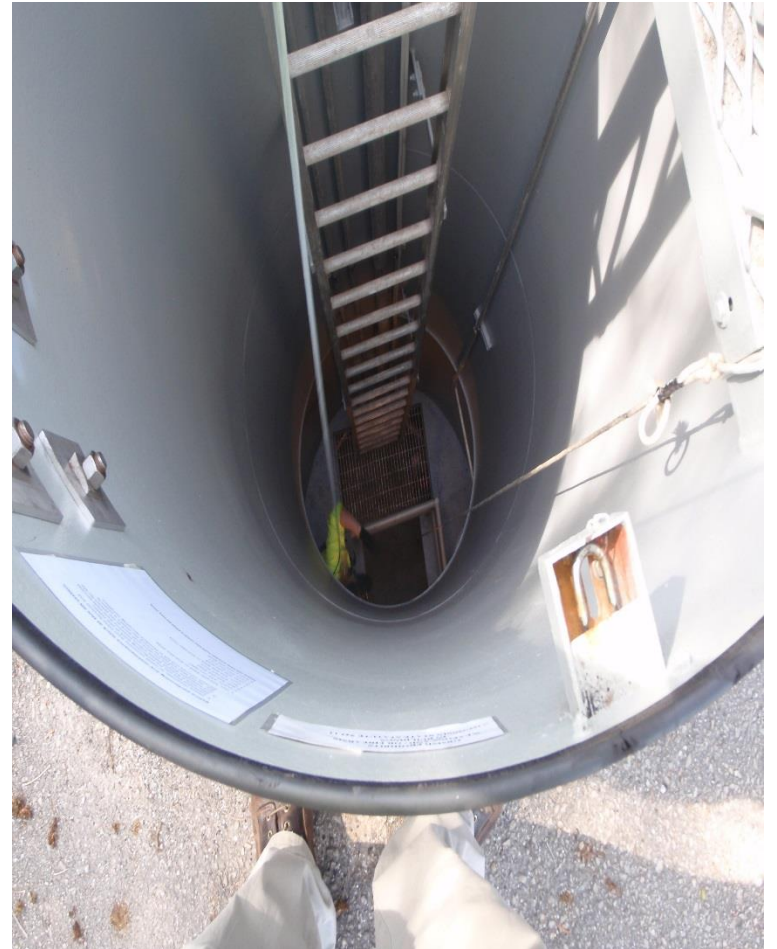
Time

Cost

Weight

Design

Height





EBS Lift Station

Benefits

Reduction of Fall Potential

Increased Rescue Opportunity

Weight

Design





Who approved this mask?





BILCO Hatch / Meter Station 22



- NFPA 820
 - Standard for Fire Protection in Wastewater Treatment and Collection Facilities 2012 Edition
- Guard Rails



East River Lift Station

**Confined Space
Upgrade**





De Pere Pump Station Sampling

Piston
Inline
Pressurized
Sampler





De Pere Washer Compactor

Maintenance
Issues





De Pere Man Down





Headworks

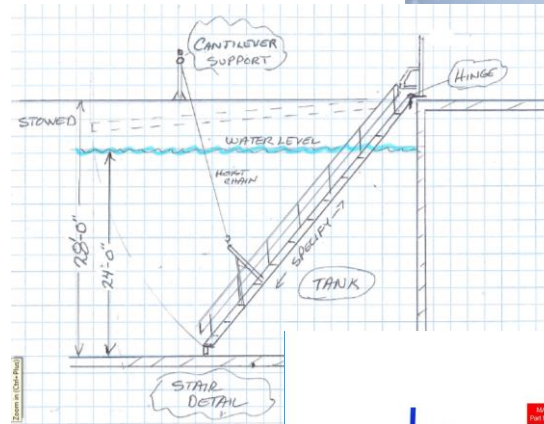
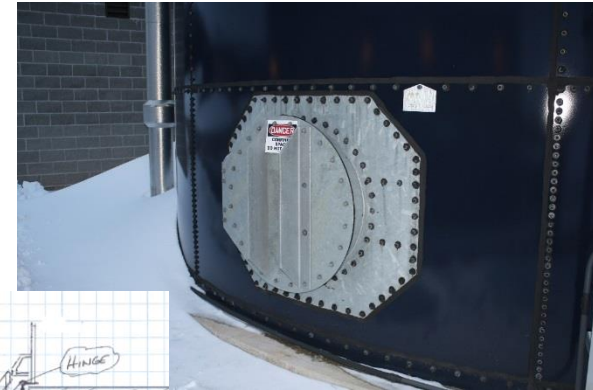
Head Works LOTO

Multiple Energy Locations





Basin Ladders



Roof Rigging

- EXTENDED
- STEAM CONNECTING PIPE (OR SPICES PLATES) Part No. 154-12
- CANTILEVER BRACKET Part No. 154-17
- DRIBBLE
- END BEAM Part No. 154-24
- MID BEAM Part No. 154-22
- END BEAM Part No. 154-24
- TELESCOPING MAST Part No. 154-20-09
- FLUTTON JACK Part No. 154-20-01
- CASTERS Part No. 154-24-08

NEW DOWN and UNDER

- Height: 36" - 64" in. extension
- Reach: Under 24" - 48" inches
- Max. load capacity: 1,000 lbs.
- Weight: 115 lbs.
- Powered power: 400 lbs.
- Part No. 3453-10

NEW CORNER ADAPTER

- Includes adapters for moving between corner to prevent excessive quantity of downweights.
- Can be used for a cable hoisting/strapping usage.
- Always for better platform position, the front support should be level.
- Can be used for all corner reaches (by corner).
- Warning: Roof Rigging with no product modifications, handles height adjustment of beams, no base required for assembly.
- Part No. 154-12





Rag Ball Removal





Backing Safety

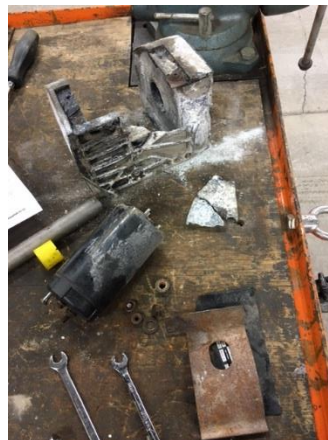




Required Safety Goal



Safety Improvement Project





Monthly Safety Training

Required

LOTO

Confined Space

Fire Extinguisher

Evacuations

Injury Protocol

PPE

Respiratory Overview

Powered Industrial Truck Overview

Security

Lead / Asbestos / Mercury

Spill Prevention

Specialized

CPR / AED / First Aid

Respiratory

Defensive Driving

MUTCD

Arch Flash

Slings / Lifting



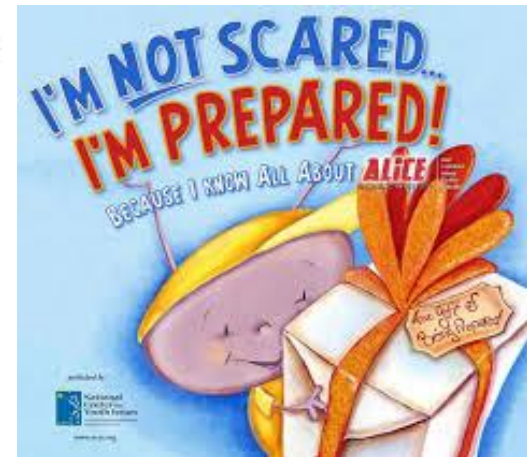
Alice

TRAINING INSTITUTE

Alert
Lockdown
Inform
Counter
Evacuate

ALERT
LOCKDOWN
INFORM
COUNTER
EVACUATE

7-8 MINUTES





i-Safety



IF A JOB IS UNSAFE TO DO, THEN IDENTIFY WAYS TO PERFORM IT SAFELY OR DON'T DO IT!

[Go to iTracker](#) [Go to iSupport](#)

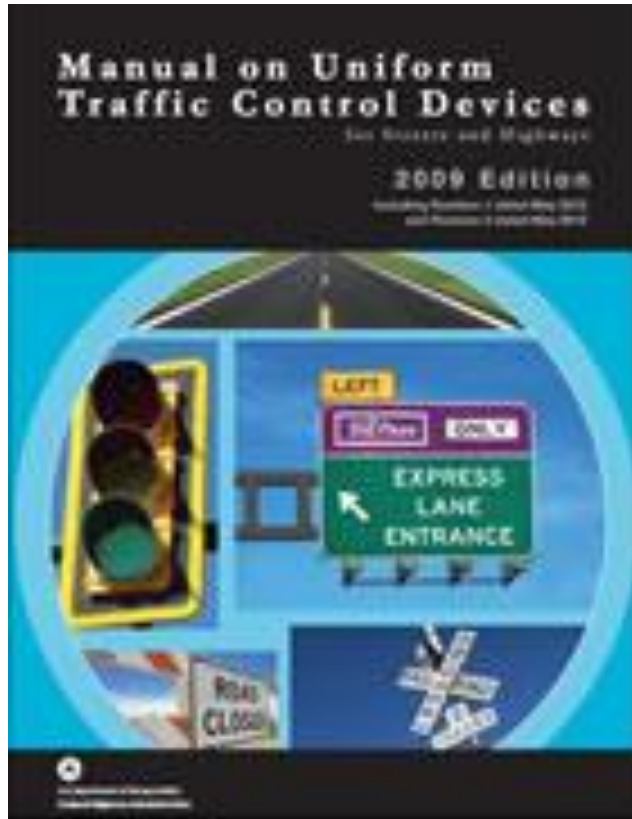


[Admin](#)

Submit Safety Incident Report	
Your NEWWater Email Address <small>(i.e. YourName@newwater.us)</small>	<input type="text"/> (required)
<ul style="list-style-type: none"> Recognized Hazard: Recognition of a substandard condition and/or work practice. Near Miss: Is an unsafe situation or condition where no personal injury was sustained and no property was damaged, but where, given a slight shift in time or position, injury and/or damage could have occurred. Safety Incident: injury or property damage occurred. 	
Incident Type	Select Value ▾ (required)
Incident Date / Time	<input type="text"/> <input type="text"/> HH ▾ : MM ▾ (required)
Incident Location <small>The location of the safety issue (e.g., "DPF - Admin Building Basement - Room 103)</small>	<input type="text"/> (required)
Subject <small>Give a short description of the safety item.</small>	<input type="text"/> (required)
Detailed Description (required) <small>Outline the full details of the issue. If this issue could cause severe bodily injury or death please contact the Safety Coordinator immediately.</small>	<input type="text"/>
Solution / Actions Taken (required) <small>Outline the actions you have taken to make the situation safe and suggest what might be done to prevent future incidents.</small>	<input type="text"/>
IF A JOB IS UNSAFE TO DO, THEN IDENTIFY WAYS TO PERFORM IT SAFELY OR DON'T DO IT!	
<input type="button" value="Add"/> <input type="button" value="Cancel"/>	



Manual on Uniform Traffic Control Devices



East Bay Shore Lift Station #11
Work Zone Safety Procedure

< 60 Minutes



All signs and cones may be omitted if a vehicle with activated high intensity lights are used "Strobe Lights and Light Bar".

> 60 Minutes



Road Work Ahead sign – 250' On Each Street
Taper – 3 Cones at 35' Apart
Buffer – 3 Cones at 60' Apart



Decision Driving Techniques





Communication Radio

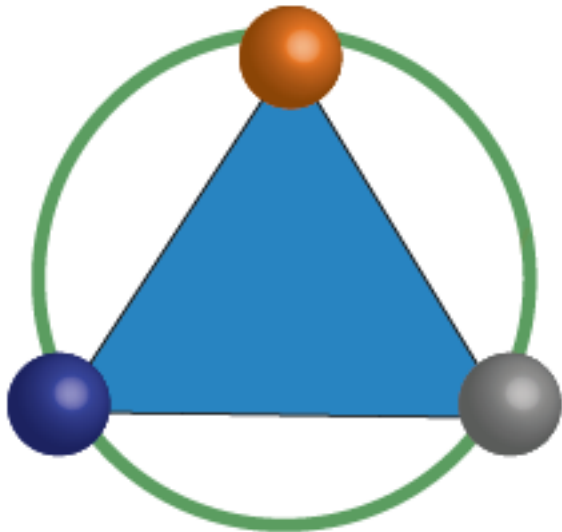




CODE RED™

Emergency Communication Made Easy.





SAFETY

Promote.Protect.Prevent