



ROCK RIVER RECOVERY

Government Affairs Seminar

Mark Riedel, PhD, P.H.





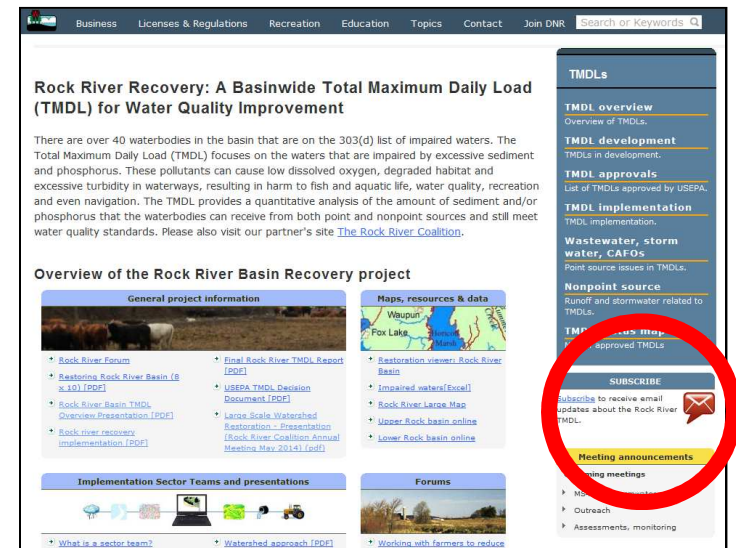
Topics

- Updates
- Implementation Plan
- Implementation



Updates

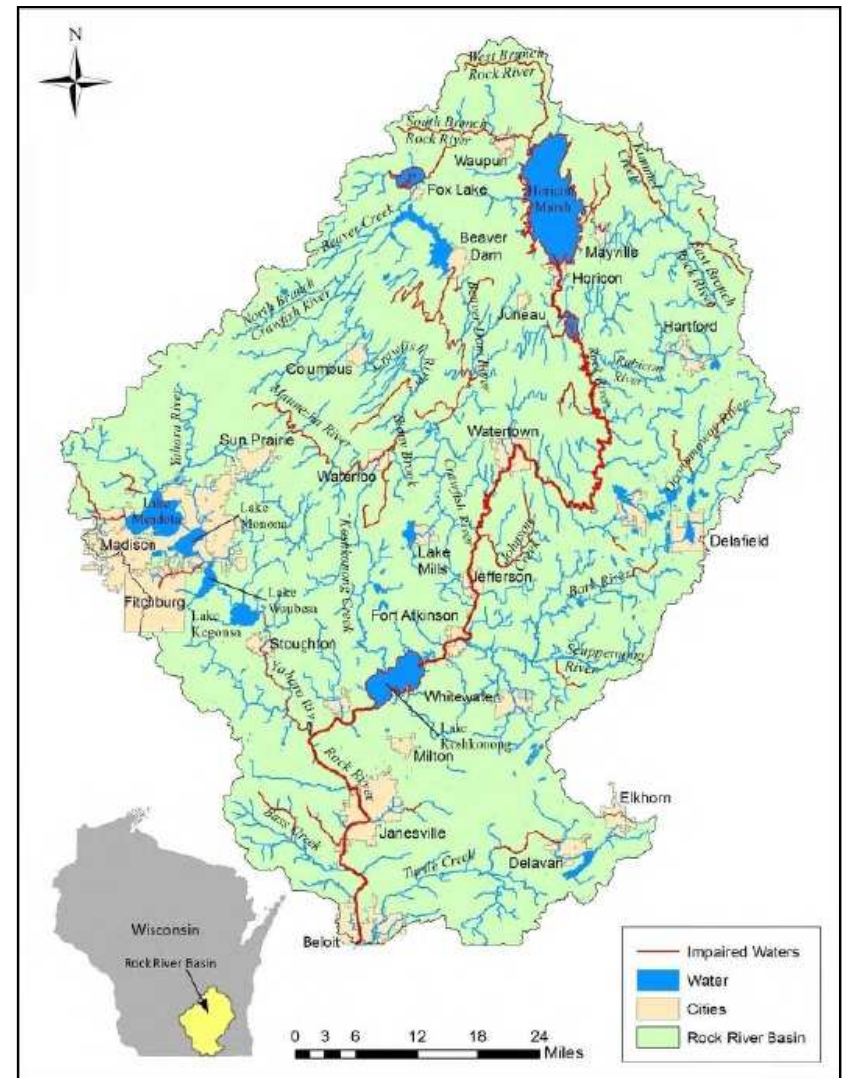
- **Gov Delivery**
- Rock River TMDL Website
 - <http://dnr.wi.gov/topic/tmdls/rockriver/>
- Rock River Reflections
- Quarterly Networking Forums
 - January - Monitoring
 - April – Stormwater/MS4
 - July – TBD
 - Sep/Oct – Annual Meeting



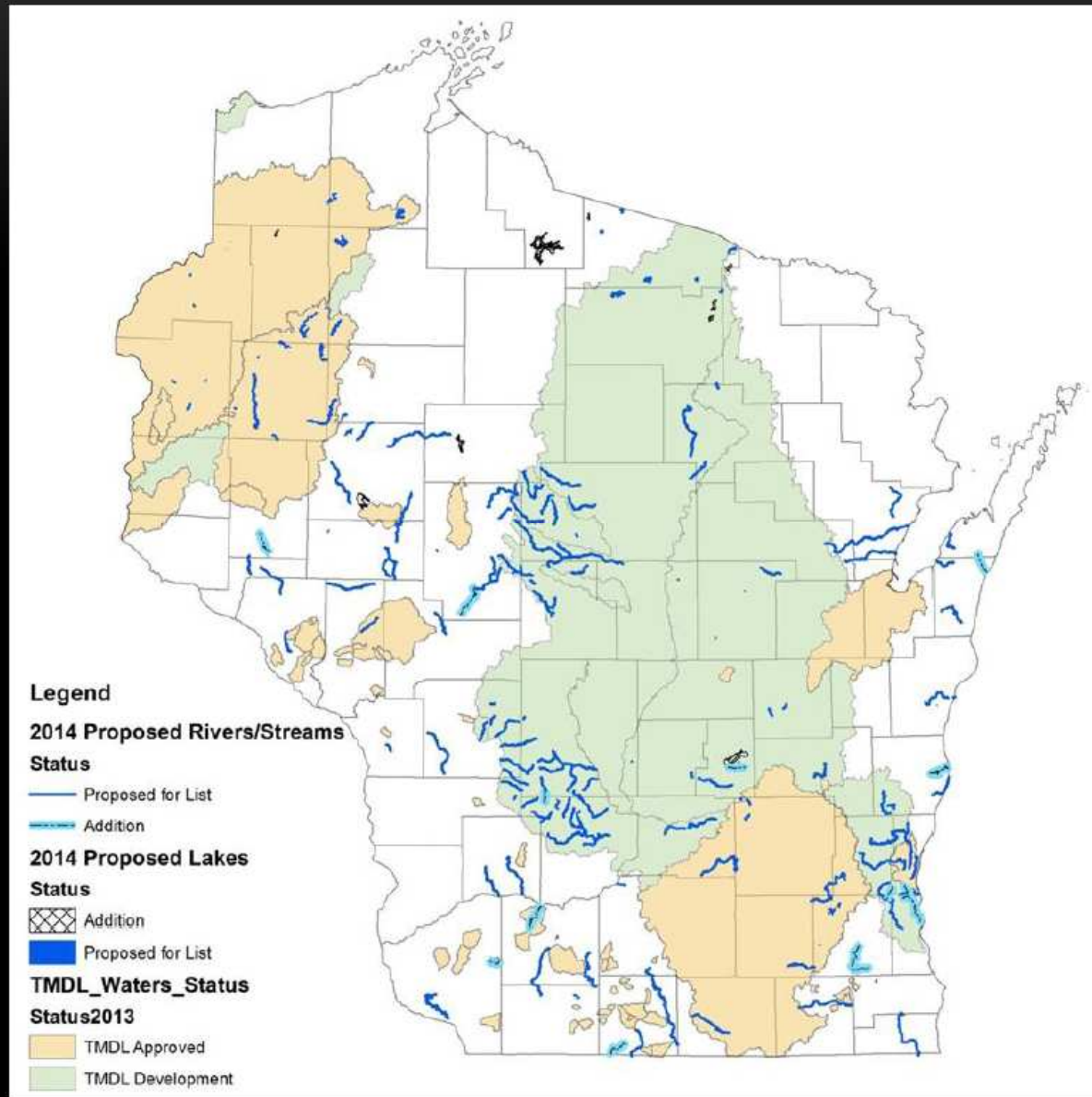
The screenshot shows the website for the Rock River Recovery project. The main heading is "Rock River Recovery: A Basinwide Total Maximum Daily Load (TMDL) for Water Quality Improvement". Below this is a paragraph explaining the project's goal to address 40 impaired waterbodies. The page is organized into several sections: "General project information" with links to forums and reports; "Maps, resources & data" with a map and links to restoration views and impaired waters; "Implementation Sector Teams and presentations" with links to sector team information and watershed approaches; and "Forums" with a link to working with farmers. On the right side, there is a "TMDLs" sidebar with links for overview, development, approvals, and implementation. At the bottom right, a "SUBSCRIBE" button is circled in red, with a note about receiving email updates.

Impaired Waters “303(d) List”

- 62 Impaired Waters (2012)
 - 20 sediment
 - 3 phosphorus
 - 39 sediment and phosphorus



NEW PHOSPHORUS LISTINGS IN TMDL AREAS





IMPLEMENTATION PLAN

RRR Implementation Plan

Rock River Recovery Implementation Plan

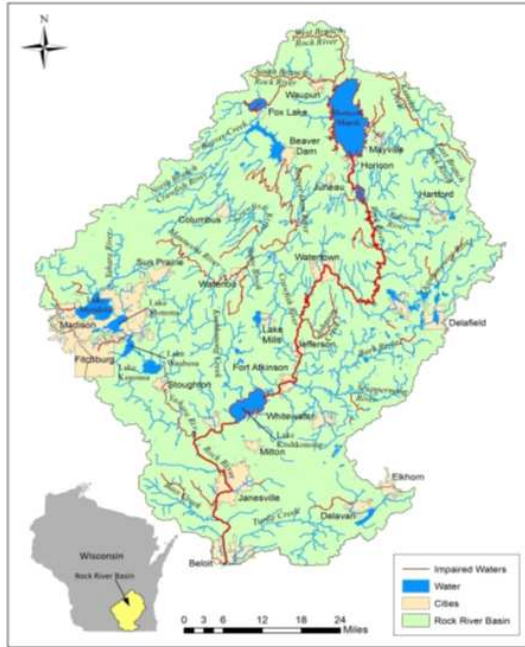


Table of Contents

Executive Summary	4
Introduction	5
Implementation Plan	14
Nine Key Elements.....	15
Summary	25
References	26
Appendix A: Section 303(d) List of Impaired Waters for the Rock River Basin	27
Appendix B: Partners.....	28
Appendix C: Past Watershed, River, and Water Quality Projects.....	30
WI DNR Priority Watershed Projects.....	31
Wisconsin Citizen Based Water Monitoring Network.....	31
Appendix D: County Land and Water Restoration Implementation	32
Columbia County Land and Water Restoration Implementation	33
Dane County Land and Water Restoration Implementation	34
Dodge County Land and Water Restoration Implementation	35
Fond du Lac County Land and Water Restoration Implementation	36
Green Lake County Land and Water Conservation Implementation.....	37
Jefferson County Land and Water Restoration Implementation	38
Rock County Land and Water Restoration Implementation	39
Walworth County Land and Water Restoration Implementation	40
Washington County Land and Water Restoration Implementation	41
Waukesha County Land and Water Restoration Implementation	42
Appendix E: Rock River Data Sources.....	43
Discharge and Water Quality Data.....	44
Appendix F: Non-Governmental Organizations	45
Appendix G: Education and Outreach Efforts.....	46
Appendix H: Rock River Recovery Website.....	47

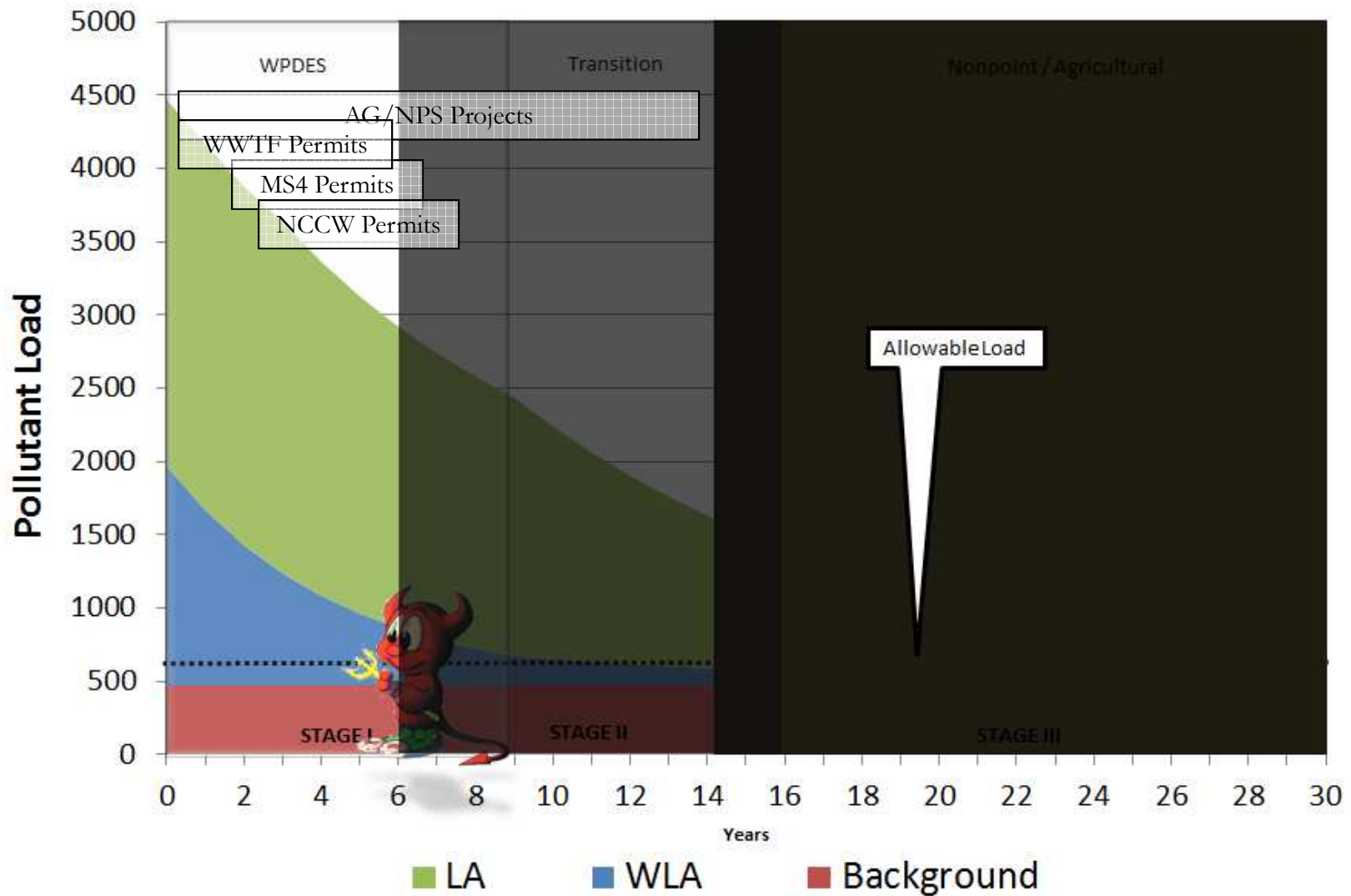


Implementation Plan Status

Sector Team	General Text	Implementation Strategy	Framework	Draft Text	Final Text
Ag/NPS	X	X	X	x	
E&O	X	X	X	X	
Monitoring	X	X	X	x	
MS4	X	X	X	X	
WW	X	X	X	X	

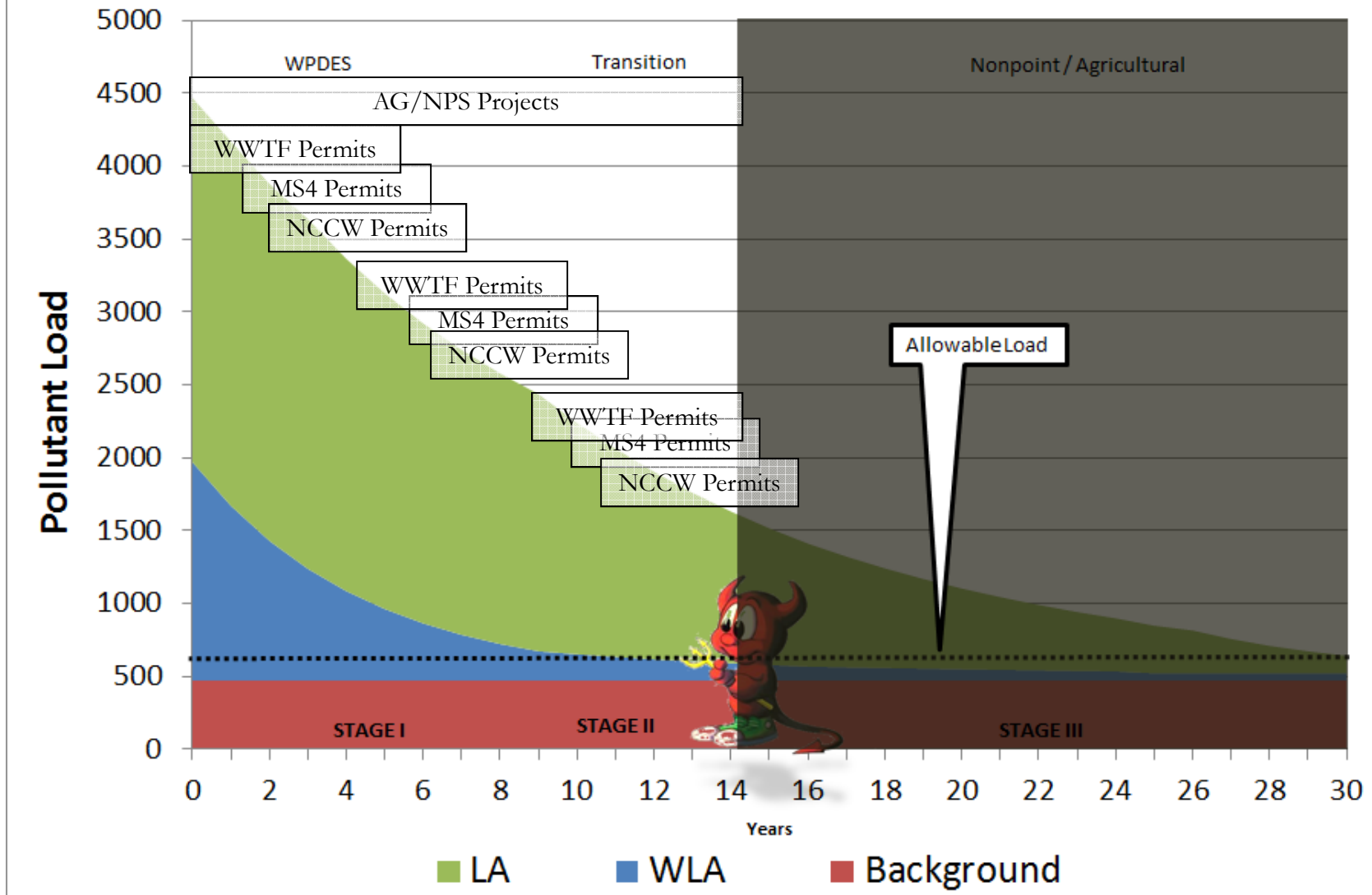
Staged Implementation

Staged TMDL Implementation



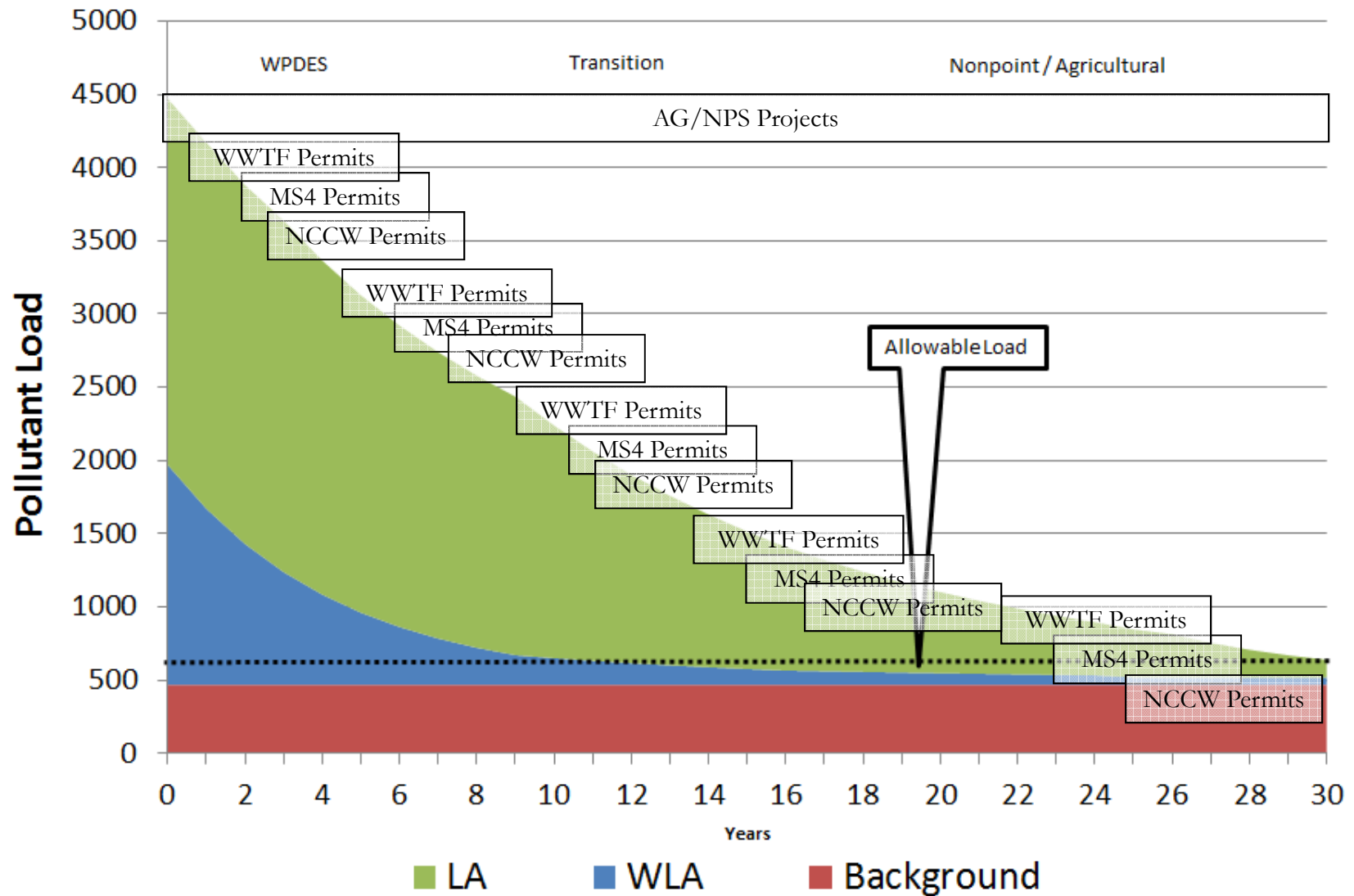
Staged Implementation

Staged TMDL Implementation



Staged Implementation

Staged TMDL Implementation





IMPLEMENTATION

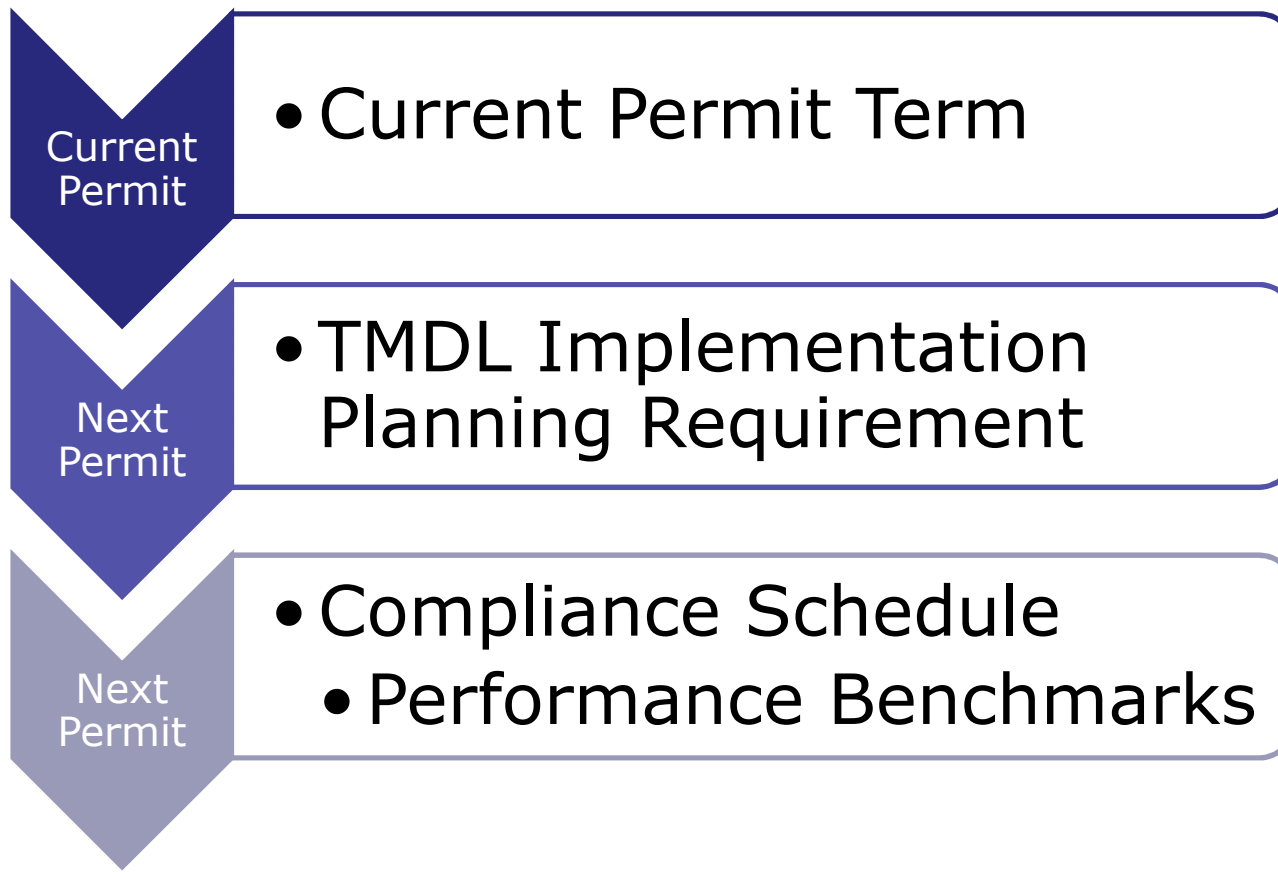


Current MS4 Implementation

- 53 Existing MS4, 7 new
- Reissue Madison Area MS4 Permit
 - Covers 19 MS4s in Dane County
 - Will more closely mirror MS4 General Permit
- Permitting New MS4s under G.P.
 - Follow up on delinquent MS4 NOIs



Implementation via MS4 Permits

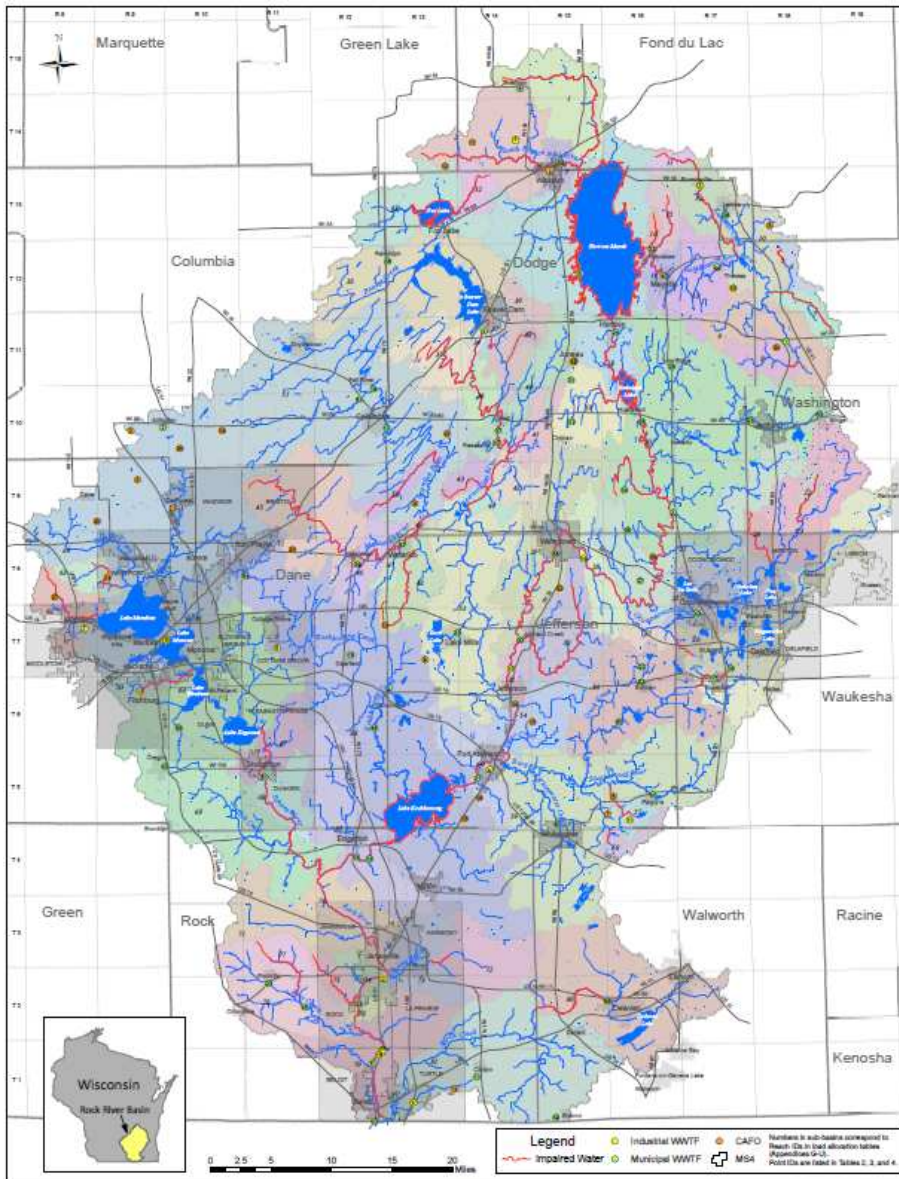




Current MS4 Implementation

- DNR Planning Grant Webinar
 - February
- MS4 WQT/AM Fact Sheet
 - Address implementation questions
- MS4 TMDL Guidance Webinar
 - Tue, Apr 14 1:30 PM - 3:30 PM
 - Kevin Kirsch and Eric Rortvedt

Waste Water



WWTF Groups	General Area	TMDL & Draft Roll Out
1	Dodge, Fond du Lac	July 2012
2	Dodge, Washington	October 2012
3	Dane, Rock	January 2013
4	Jefferson, Waukesha	May 2013
5	Dodge, Columbia, Jefferson	October 2013
6	Dodge	October 2013
7	Dane	January 2014
8	Waukesha, Jefferson, Walworth	July 2014
9	Rock	2015
10	Rock, Walworth	2015



Waste Water

81 WWTP Permits

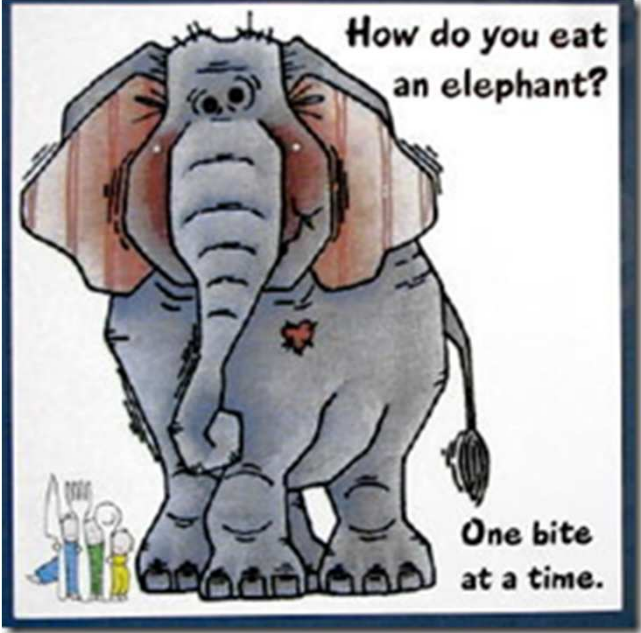
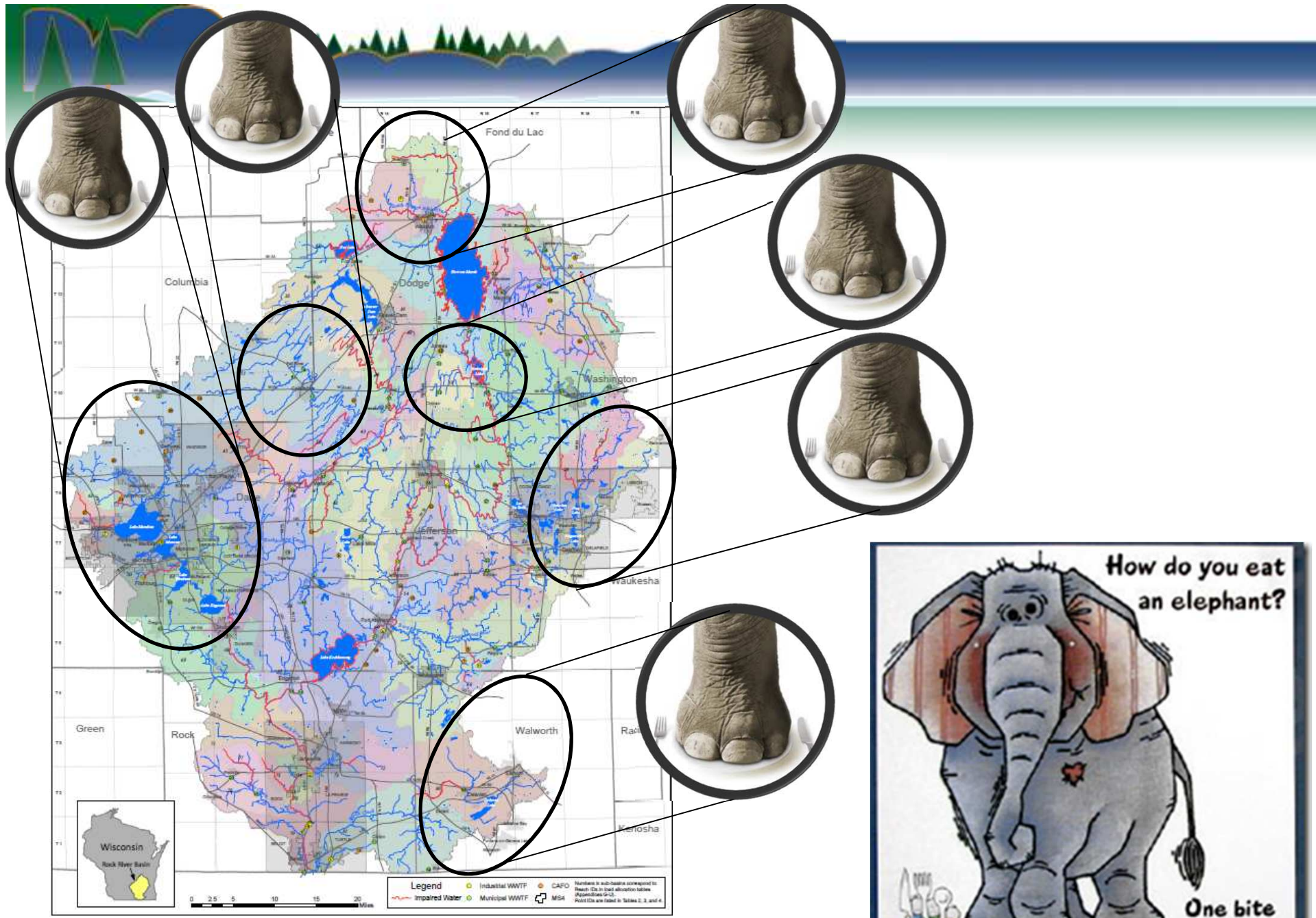
- 38 Reissued
 - 30 Municipalities / 8 Industries
 - 2 Seriously considering AM
 - 1 Seriously considering Upgrade
 - 5 Can meet limits with just optimization
 - 1 Can meet with minor upgrade (chemical addition)
 - 3 Permittees with additional allocation
 - 7 Facilities in WQT discussions
 - 3 potentially ceasing surface water discharge



Watershed Compliance Options

WLA ==> LA

- Watershed Groups/Sponsors
 - Active engaged County Conservationist
 - NGOs - RRC, Sand County Fdn, Tall Pines, Lake Associations
 - SEWRPC, MMSD
 - Agronomists, CCA's, NMP's
 - Municipalities, MS4's, non-permitted
 - Industry





QUESTIONS





RESOURCES



WI DNR Contact Info

- Andy Morton (Runoff Supervisor)
James.Morton@wisconsin.gov
- **Mark Riedel** (TMDL P.M., Education & Outreach)
marks.riedel@wisconsin.gov
- Mike Gilbertson (Ag and NPS)
mike.gilbertson@wisconsin.gov
- Dan Heim (Monitoring)
daniel.heim@wisconsin.gov
- Eric Rortvedt (MS4)
eric.rortvedt@wisconsin.gov
- Amy Garbe (WWTF, WQT, AM)
amy.garbe@wisconsin.gov



WI DNR Web Info

- Rock River TMDL
 - <http://dnr.wi.gov/topic/tmdls/rockriver/>
- Phosphorus Rules
 - <http://dnr.wi.gov/topic/surfacewater/phosphorus.html>
- WPDES Permits on Public Notice
 - <http://dnr.wi.gov/topic/wastewater/publicnotices.html>
- Wisconsin's Adaptive Management
 - <http://dnr.wi.gov/topic/surfacewater/adaptivemanagement.html>
- Water Quality Trading Website
 - <http://dnr.wi.gov/topic/surfacewater/waterqualitytrading.html>
- Webinars
 - <http://dnr.wi.gov/topic/SurfaceWater/atlas.html>



Webinars

<http://dnr.wi.gov/topic/SurfaceWater/atlas.html>

- WQT & AM
 - WQT & AM: Overview
 - WQT & AM: Finding, Quantifying Credits
 - WQT & AM: Developing a Plan
 - WQT & AM: Implementing & Verifying Offsets
- Understanding Phosphorus Rules & Management Option
- Clean Water Act: Water Quality Report to Congress



Guidance Documents

- “Storm Water Management Program Guidance”, Anticipated 2014/2015
- “Watershed Permitting Guidance”, Guidance No: 3400-2014-01, 43 p.
- “Wisconsin 2014 Consolidated Assessment and Listing Methodology (WisCALM)”, September 2013, 63 p.
- “Guidance for Implementing Water Quality Trading in the WPDES Permits”, Guidance No: 3800-2013-04, August 2013, 88 p.
- “A Water Quality Trading How To Manual”, Guidance No: 3400-2013-03, September 2013. 85p.
- “TMDL Development and Implementation Guidance: Integrating the WPDES and Impaired Waters Programs, Edition No. 3”, Guidance No: 3400-2013-02, November 2013, 52 p.
- “Guidance for Implementing Wisconsin’s Phosphorus Water Quality Standards for Point Source Discharges, Edition No. 1”, Guidance No: 3800-2011-02, 2012, 152 p.
- “Adaptive Management Technical Handbook: A Guidance Document for Stakeholders”, December, 2012, 104 p.
- “ A Water Quality Trading Framework for Wisconsin: A Report to the Natural Resources Board”, July 2011, 62 p.
- “Total Maximum Daily Loads for Total Phosphorus and Total Suspended Solids in the Rock River Basin”, Final Report, September 2011. 215p.



Sector Teams

SECTOR TEAMS

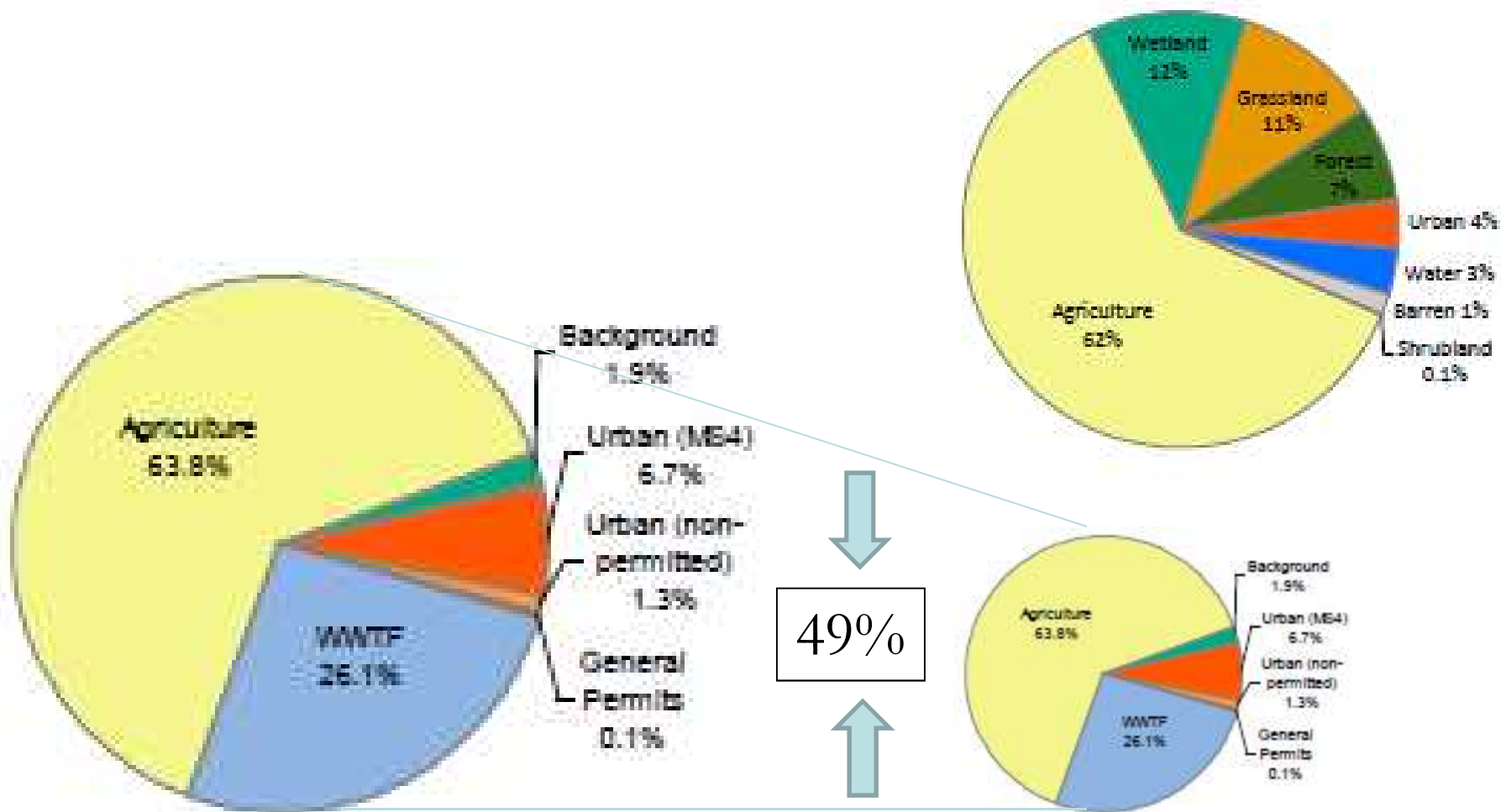
- Agriculture
- Education & Outreach
- Monitoring
- MS4
- WW



Agriculture

- Full sector team meetings
- Working meetings
 - Nutrient management
 - AM/WQT meetings
 - Agronomist meetings
- NRCS meetings
- ATCP 50 revisions
 - LWMP updates, 9 K.E., Grant eligibility
 - County template

Agriculture

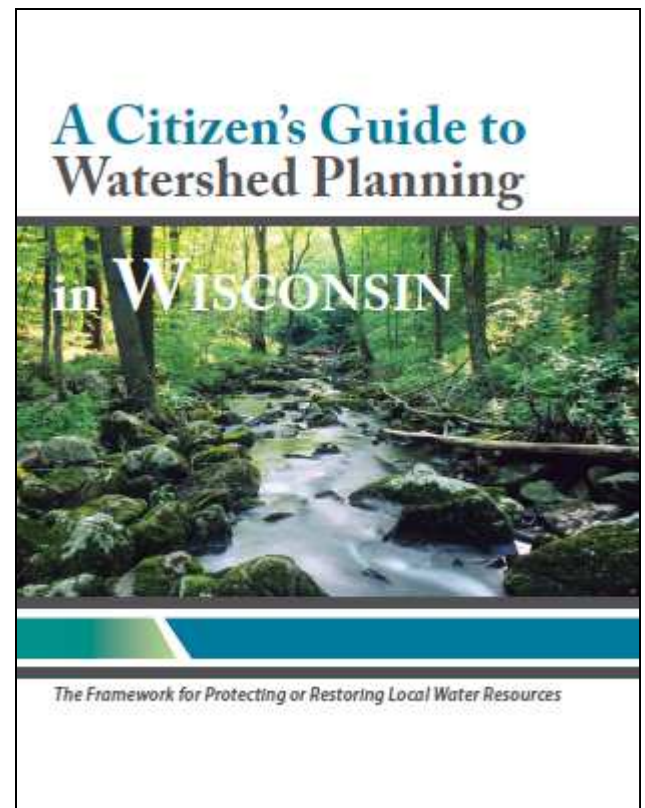




Education & Outreach

UWEX, RRC, and WIDNR

- Full sector team meetings
- Working meetings
- Articles
 - RRR, local papers
 - Radio
- New website
- Gov Delivery
- Annual Meeting

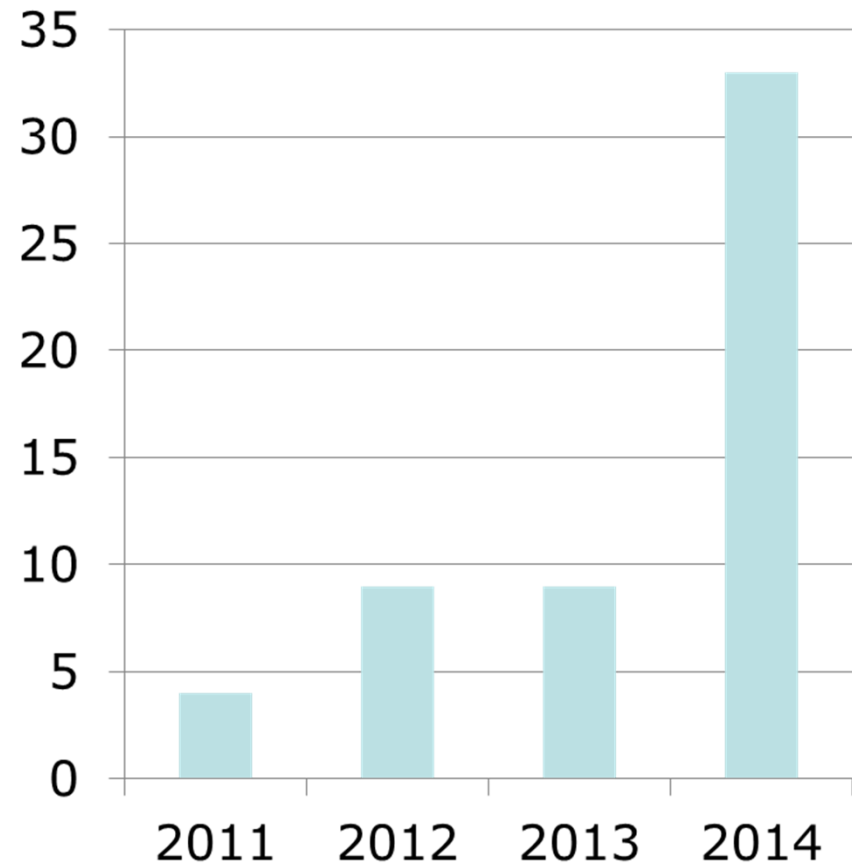




Education & Outreach

- 55 Meetings
 - 2011-2012
 - TMDL
 - E&O
 - Sector Team
 - 31 Since 2013
 - Planning
 - Implementation
 - Sector Team
 - Permitting
 - WQT/AM
 - E&O

RRR TMDL Meetings





Monitoring

- 2014 Update Integrated Monitoring Program
 - Tier I: Trend
 - Tier II: Targeted
 - Tier III: Evaluation
- Targeted Watershed Assessment
 - One or two HUC12 per Biologist
- Horicon Marsh Watershed Improvement Project



Monitoring

- 1993 – Kickoff
 - Monitoring
- 2002 – NR216
 - Waste load reductions
 - Stormwater reductions
- 2006 – USFW NPS project
 - NMP
 - CRP land
 - Buffers and easements