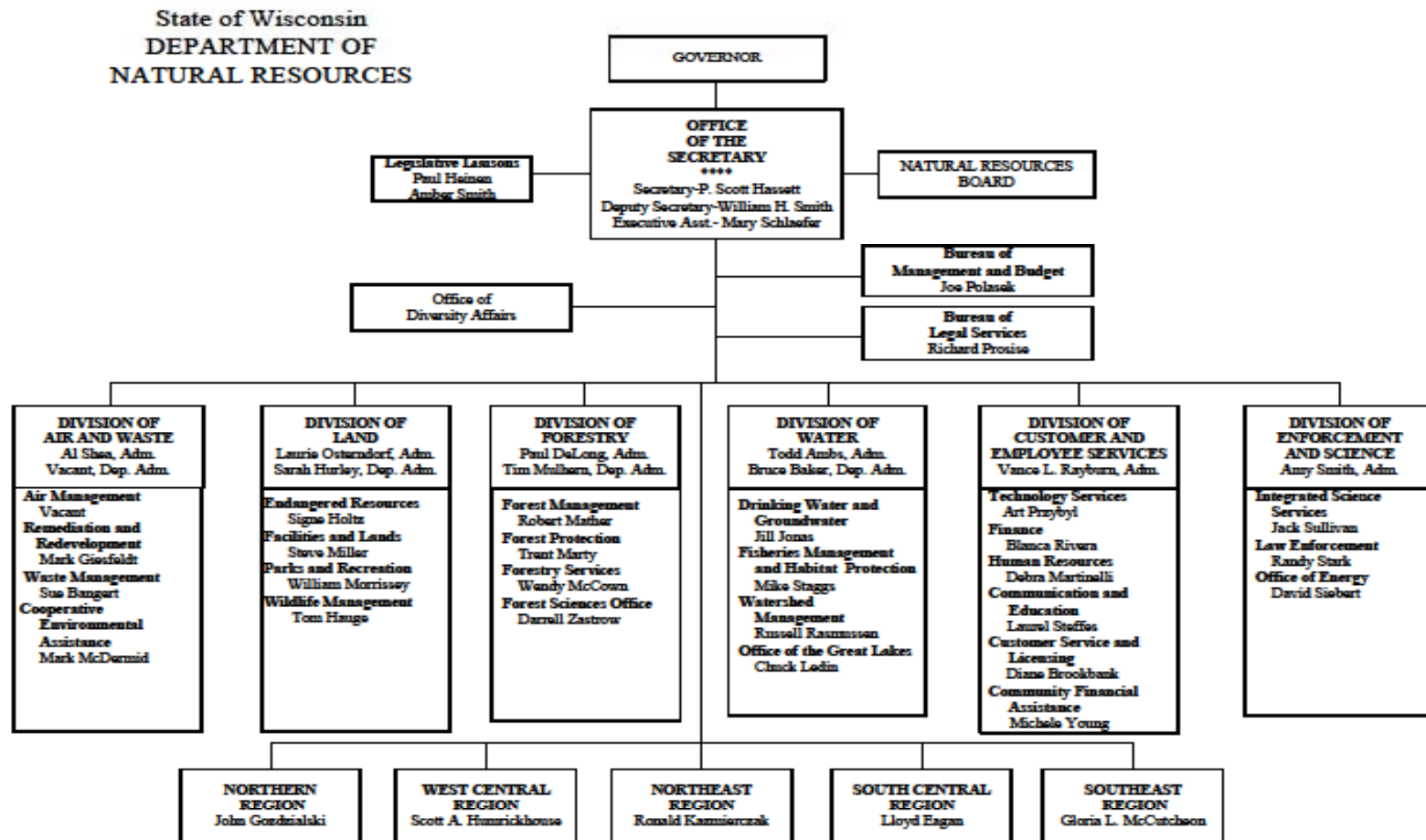


---

# DNR Staffing and Organization

Ken Johnson  
Acting Deputy  
Bureau of Watershed Management

# DNR Organization Charts





# Series of Reorganization

---

- 1996 established the basin concept
- 1998 removed land staff from the basins concept
- 2000-2005 removed Drinking water staff and Fish management staff from the Basin concept
- 2009 Reduction in management staff

# 2009 Changes in the Structure

---

- Elimination of CAES (Customer and Employee Services) position in the Region
  - Reduction of service center hours
    - Some service centers are only open 1 day a week
  - Elimination of some service centers
  - Elimination of 5 CAES Leaders
  - Reduction of Water Management staff
    - Elimination of the Aquatic Habitat Expert
    - Reduction of the number of basin Supervisors in each region

# Reduced number of Service Centers and Hours

---

- 31 Service Centers Remain
- Open from a maximum of 4 days a week at Superior and Black River Falls
- Open to a minimum of 1 day a week, Cumberland, Hayward etc
- Rest vary from 1 to three days

# Budget Shortfalls and Staffing

---

- DNR Funding sources
  - General Purpose Revenue GPR
  - Federal CWA and SDWA
  - Segregated funds
    - Fee funded programs
    - Gas tax
    - Other dedicated sources

# GPR Budgets

---

- GPR = Income tax and property tax Sales tax
- Last September /October was the largest single month decline in state GPR revenues EVER
- Results
  - No new GPR positions
  - No rehires of GPR positions
  - Very limited rehires of Federal or segregated funded positions
  - Adaptive management of work across state as well as workload elimination.

# DNR UPDATE

---

- Ken Johnson  
Acting Deputy Director  
Bureau of Watershed Management  
Water Leader SCR

# Rules are State of Wisconsin Law

---

- Developed by programs with strong oversight
  - Division
  - Secretary's office
  - Natural Resources Board
  - Legislature

# Natural Resources Board

## Rule Review

---

- Color coded process
  - Pink Sheet
    - Notice to the Board that the agency is planning on developing or rewriting a rule
  - Yellow Sheet
    - Program will be bringing a rule for board review in two months
  - Green Sheet
    - The rule will be presented at the next Board meeting
- **Hearings**
  - **The board amends or authorizes a number of hearings around the state**
- **Final Board Approval**
- **Legislative Review**

# NR 151

## Runoff Management

---

- Agricultural and Urban Storm Water standards
- Status: Currently out for Hearing 7 hearings throughout the state
- Agricultural Highlights:
- Move to phosphorus index (Wisconsin Buffer Initiative)
  - 20 foot tillage setback
  - No significant discharge of waste water side streams from livestock operation
  - PI adjustments for impaired waterways
  - Adjustment of PI based upon receiving water

# NR 151

## Runoff Management (continued)

---

### ■ **Urban Highlights**

#### ■ Construction

- No Ponds in navigable waters
- Change from the current 80% urban sediment reduction standard to 5 tons per acre
  - Applies to ALL sites

#### ■ Post-Construction

#### ■ Developed Urban Area

#### ■ Transportation

# Redevelopment

---

- Eliminated exemption
  - Exempt sites could reduce TSS
- Changed standard from 40% TSS reduction for redeveloped site to 50% TSS reduction on parking lots and roads
  - Parking lots and roads are dirtiest source areas



# Peak Flow Control

---

- Added 1-yr, 24-hr peak flow control requirement to the 2-yr, 24-hr peak flow requirement
  - 2-yr event was not protective of bank full condition



# Infiltration

---

- Standard now based on ability of sites to infiltrate
- For MDR to HDR with minimal lawn, the 90% goal was too high.
- For commercial, industrial and institutional sites with lawn area, the 60% goal was too low.
- Revised code resolves these problems



# **Targeted Runoff Management (TRM) Grant Program**

---

**and**

# **Urban Nonpoint Source and Storm Water Grant Program**

**NR 153 and 155**

- Status- both out for hearings

# Major changes to NR 153 and 155

---

- Four project categories created in NR153.
  - Large scale TMDL      Large scale NPS
  - Small scale TMDL      Small scale NPS
- NOD funding mechanism in NR 153
- Both place additional caps on grant awards

# Shore Land Zoning NR 115

---

- Status – Effective February 1<sup>st</sup>
- Highlights:
  - Establishes development infiltration standards in the shore land area
  - Establishes redevelopment standards for non-conforming uses

# Nutrient Standards Phosphorus

## NR 102 and NR 217

---

- In development since 2000, required by EPA
- Status:
  - Green Sheet is due for the March Board Meeting/permission to go to Public hearing
    - Hearings will be in May and June
- Highlights:
  - Establishes Water Quality standard for P in Streams, Rivers, inlands and the Great Lakes
    - Streams 75 ug/l (0.075mg/l)
    - Rivers (listed by rule) 100ug/ (0.1mg/l)
    - Inland Lakes 15-40 ug/l (0.015mg/l)
    - Great Lakes 7ug/l Lake Michigan 5 ug/l Lake Superior
- Water Quality Limits
  - Impact on permittees will depend on the quality of the receiving water and the quality of the effluent

# Thermal Discharges

---

- Establishes new thermal discharge standards
- Highlights:
  - Establishes several criteria
    - Acute Criteria
    - Sub-lethal
    - Human Health
    - Seasonal
  - Applies to Municipalities
    - Alternatives to limits may be requested
    - Collection of weekly temperature data recommended
- Status:
  - Legislative review
  - Could be effective as soon as May

# Rules for Commercial Storm Water Sites

---

- Establishes rules for how the Department will regulate commercially developed sites formerly regulated by the Department of Commerce
- Status:
  - Pink sheet to the Board next month
  - MOU between DNR and Commerce

# Anti Degradation

## NR 207

---

- Pink Sheet approved by the Board
- Highlights:
  - Goal is to ensure consistency with Federal Requirements (currently EPA deficient)
  - Develops discharge standards for exceptional, outstanding and impaired waterways

Status: Very early Development phase

## NR 106

### PROCEDURES FOR CALCULATING WATER QUALITY BASED EFFLUENT LIMITATIONS

### FOR TOXIC AND ORGANOLEPTIC SUBSTANCES DISCHARGED TO SURFACE WATERS

---

#### ■ Chloride Variance

- EPA has decided to directly approve all chloride variances as of fall 2009
- A variance is permission to **temporarily** exceed water quality and must include source reduction measures (SRMs) that bring permittee closer to meeting WQBEL

#### ■ Mercury Variance

- EPA objected to our Mercury Rule definition of representative data for purposes of reasonable potential
- EPA has decided to directly approve all Mercury variances (20+ so far)
- To get a renewal of a variance, permittees must have complied with conditions of first variance

# General Permits for CAFOs

---

- Two GPs
  - 300 – 999 animal units
  - 1000 – 4000 animal units
  - Establishes up front conditions for CAFOS and eliminates separate EAs for all but the very largest CAFOs
  - Status: Out for Public Notice this month

# Ballast Water GP

---

- Establishes ballast water discharge standards ocean going vessels in the great lakes
- Status:
  - Public noticed in December
  - Objections from environmental groups concerning the standard
  - TAC being established